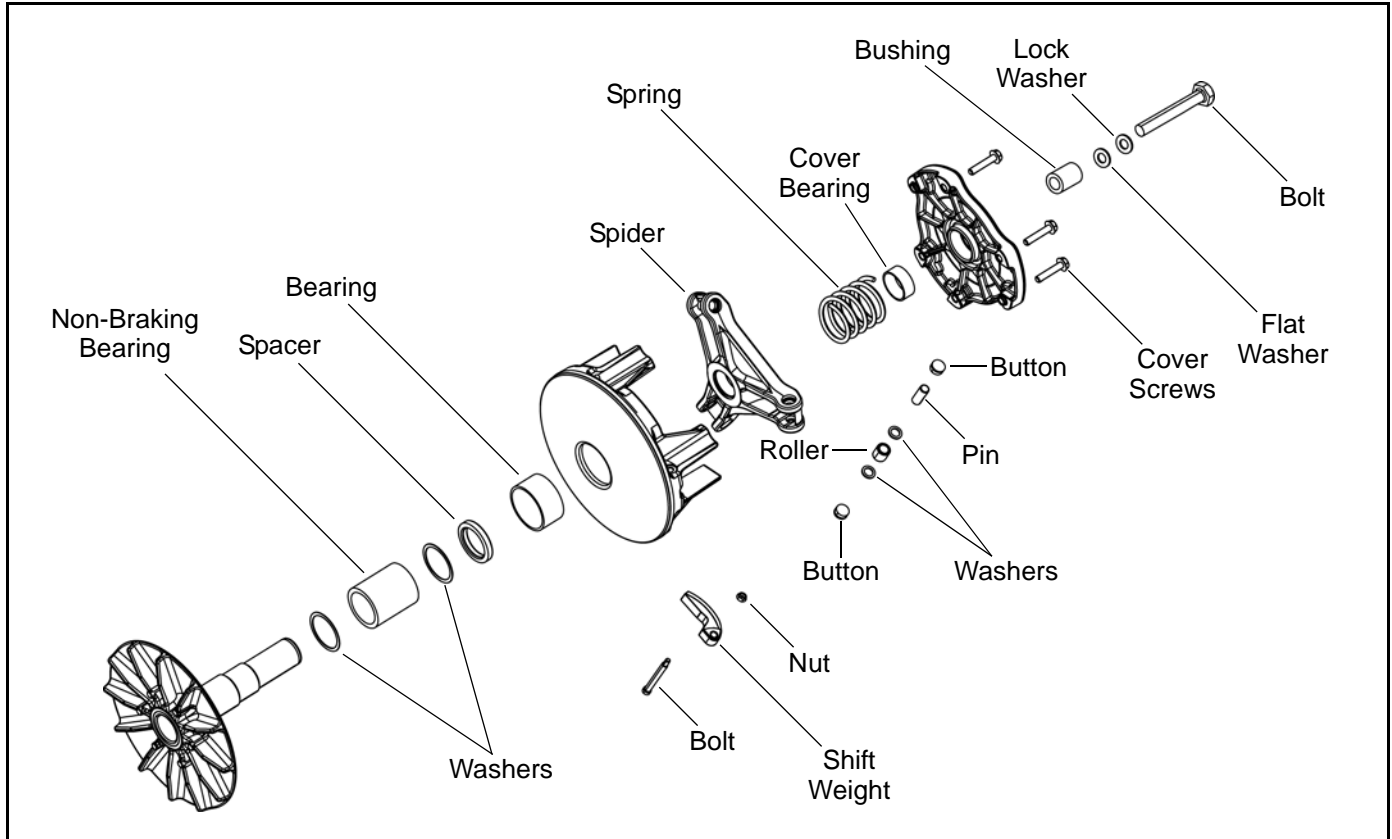


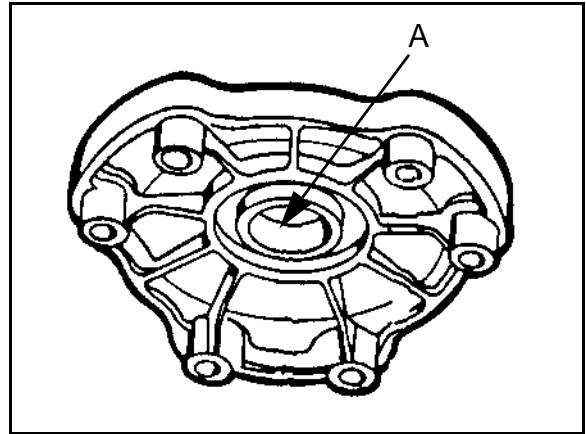
## 2010 Non-Braking Exploded View (RZR / RZR S)



6

### Clutch Disassembly

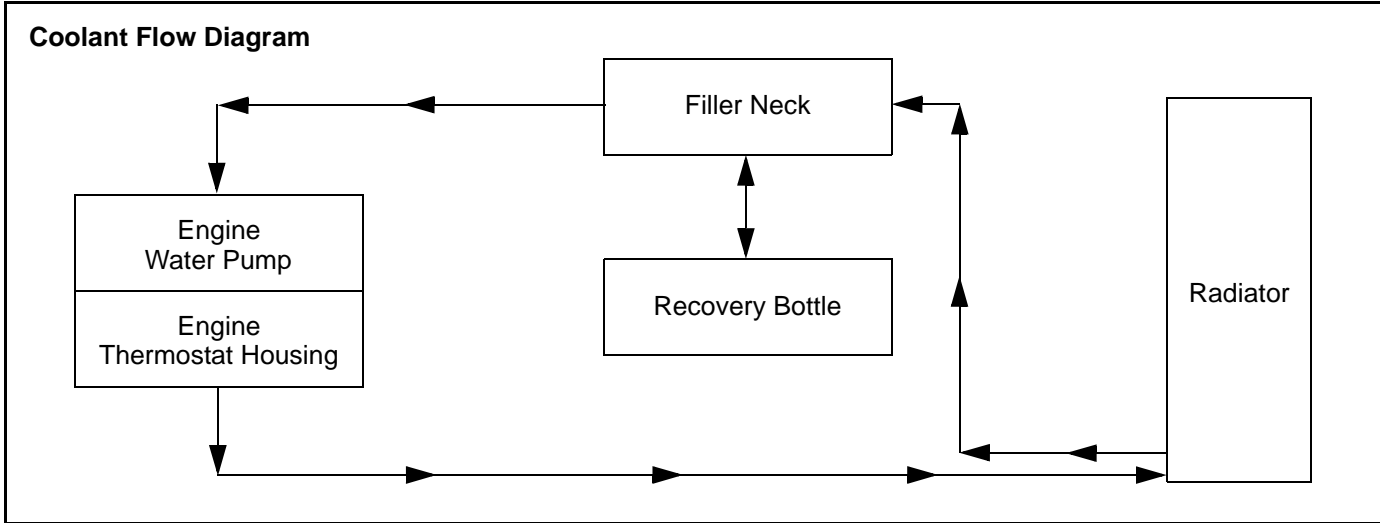
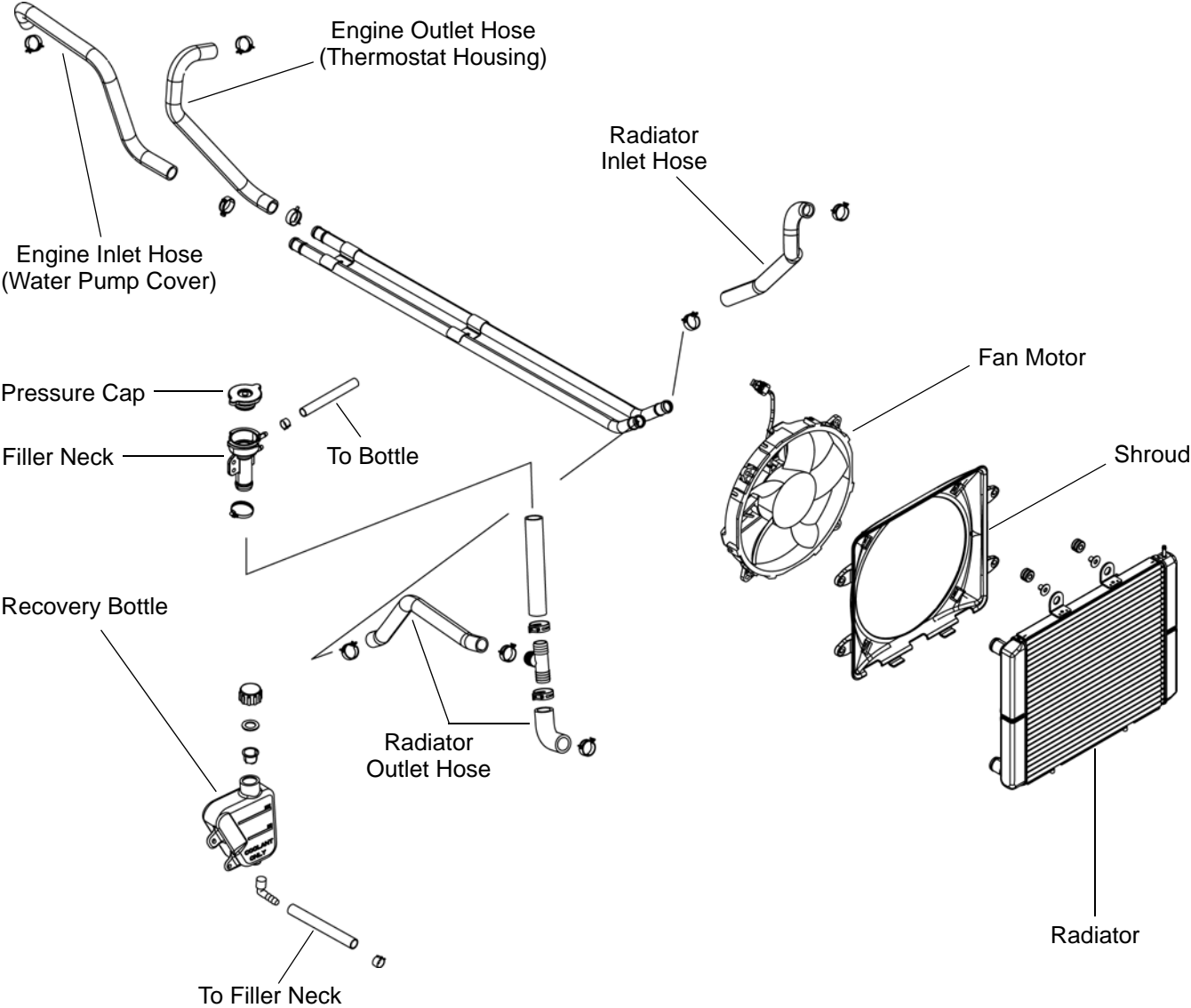
- Using a permanent marker, mark the cover, spider, and moveable and stationary sheaves for reference, as the cast in X's may not have been in alignment before disassembly.
- Inspect cover bushing (A). The outer cover bushing is manufactured with a Teflon™ coating. Wear is determined by the amount of Teflon™ remaining on the bushing.



- Mark the stationary sheave and clutch shaft to verify the shaft has not turned in the sheave after tightening the spider during clutch assembly.
- Remove cover bolts evenly in a cross pattern and remove cover plate.

**Cover Bushing Inspection:**  
 Replace the cover bushing if more brass than Teflon™ is visible on the bushing. Refer to bushing replacement in this chapter.

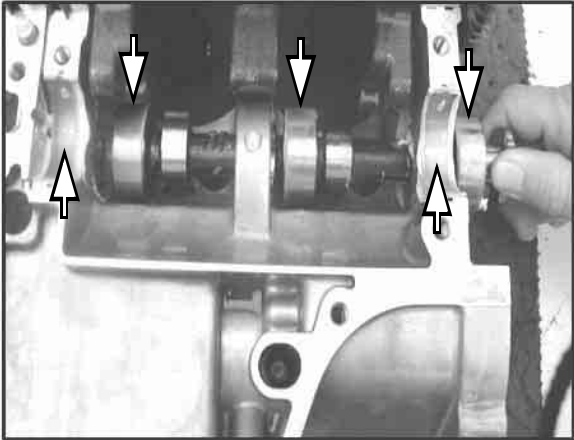
Cooling System Exploded View



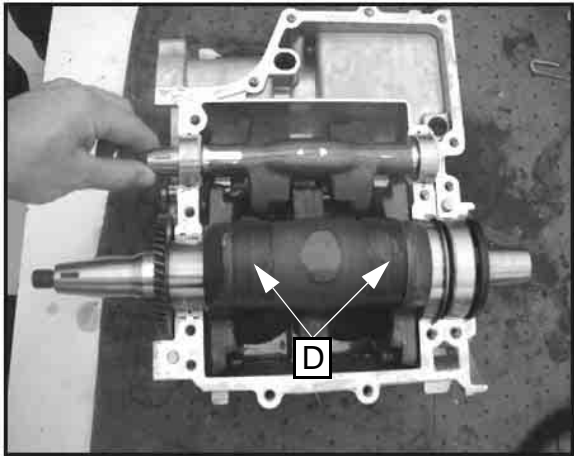
# ENGINE

**NOTE: Always install new balance shaft bearings.**

4. Apply assembly lube to cam journals and balance shaft bearing surfaces of the MAG case half. Install camshaft and balance shaft.

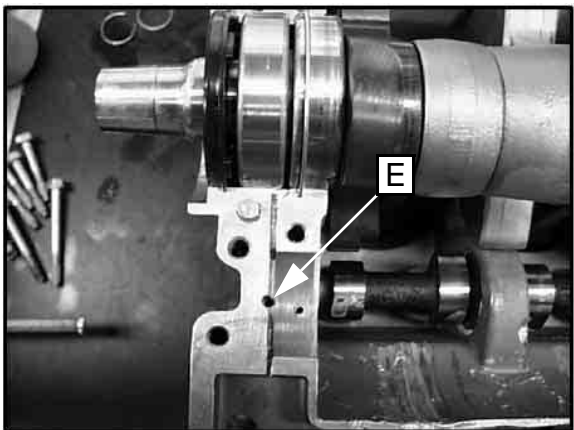


5. Install crankshaft assembly and apply engine oil to crank pins and rods (D). Apply assembly lube to the main journals and bearings.




6. Apply Crankcase Sealant (PN 2871557) to the top gearcase half.

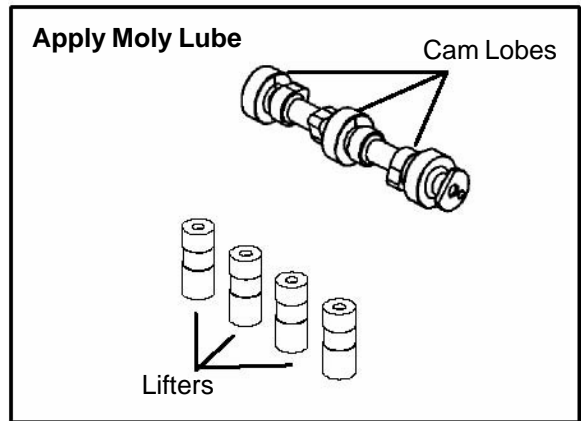
**NOTE: Do not apply sealant to cam relief hole (E).**



7. Assemble the crankcase halves. Apply LocTite™ 242 (PN 2871949) to the threads and pipe sealant to the bolt flanges. Torque bolts to specification following torque pattern at beginning of this chapter.


<b>Crankcase Bolt Torque: 22 ± 2 ft. lbs. (30 ± 3 Nm) Torque in sequence</b>

8. Lubricate cam lobes and valve lifters with Moly Lube Grease.



9. Lubricate lifters with engine oil and install in the original order as removed in disassembly. Apply Lubricant or Moly Lube to the ends of the lifters.

**NOTE: Always replace the camshaft and lifters as a set.**

