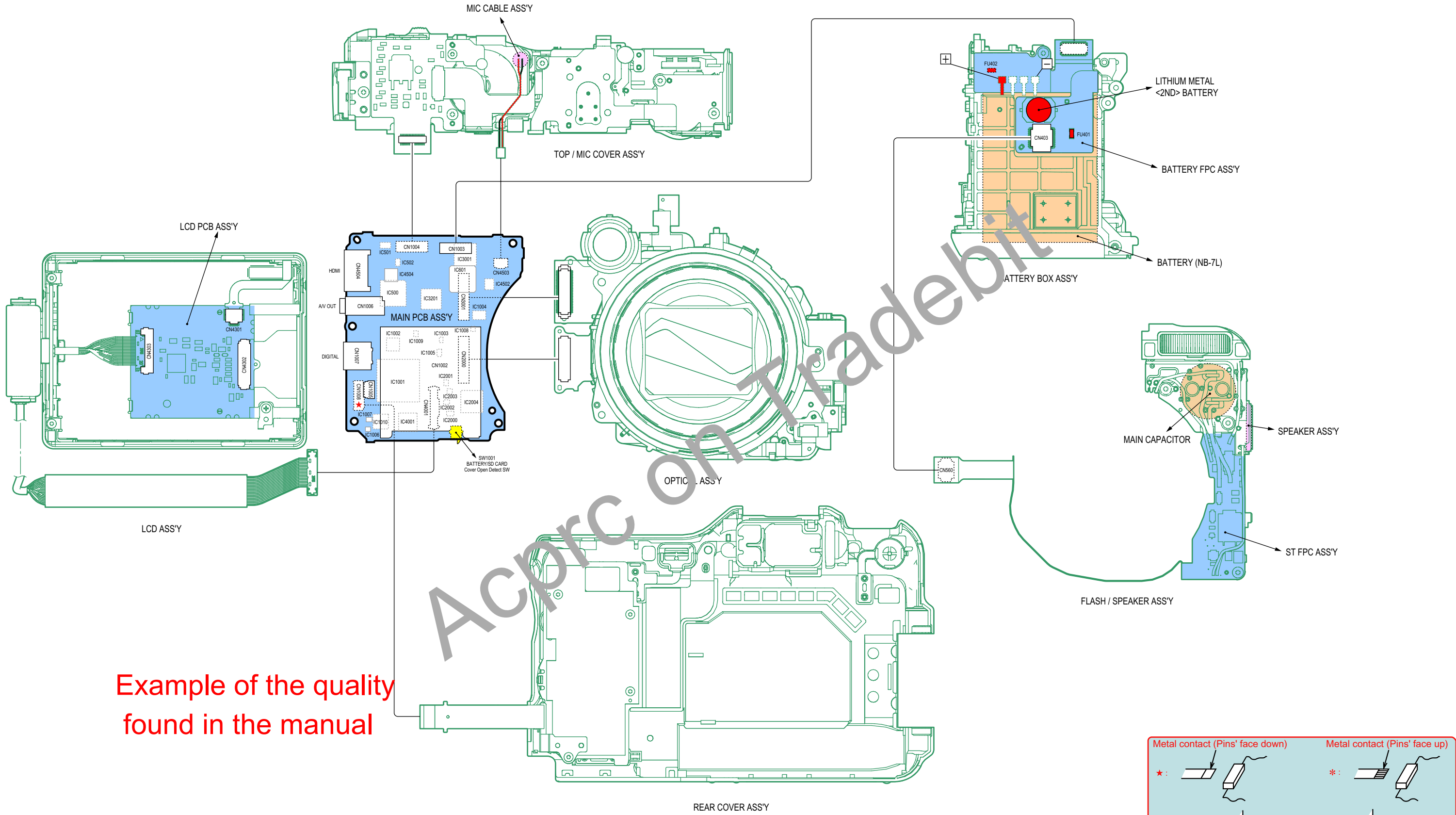
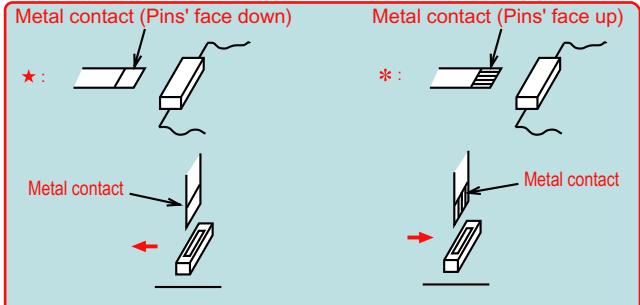


6. INTERCONNECTION DIAGRAM



Example of the quality found in the manual



3.3 Separation of REAR COVER ASS'Y

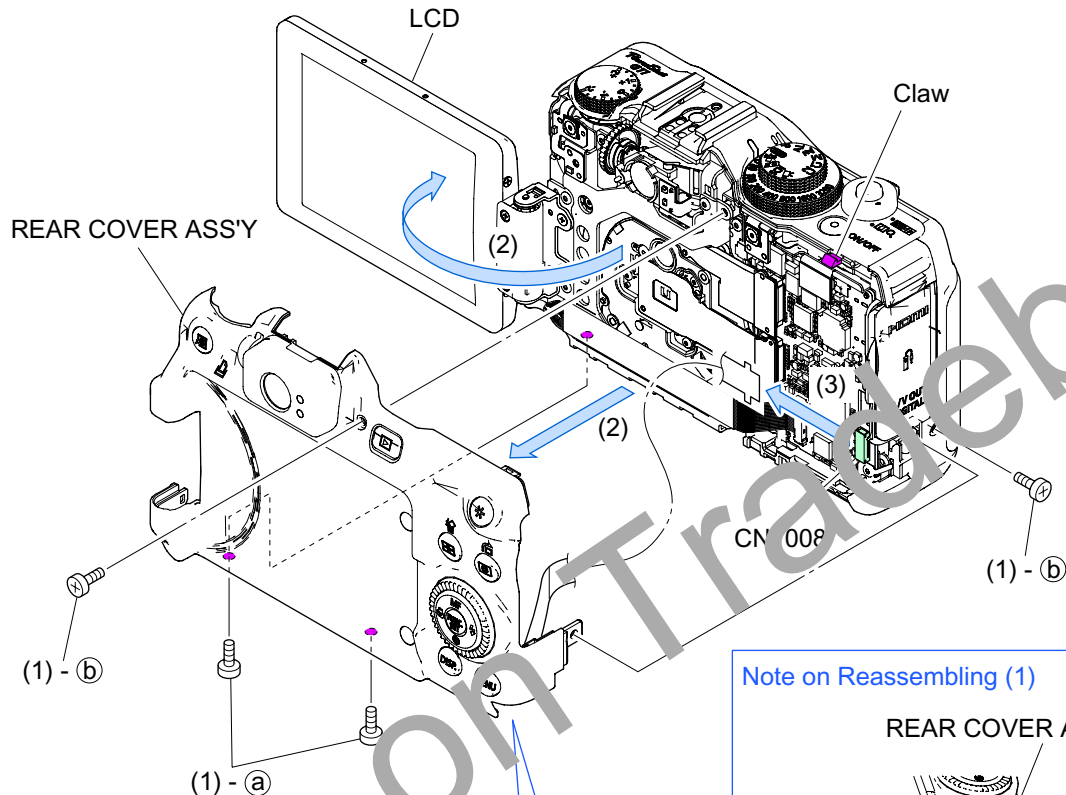
- (1) Remove four screws (a × 2, b × 2).
- (2) Open the LCD, disengage the claw, and then detach the REAR COVER ASS'Y.

Note: Since the REAR COVER ASS'Y is connected to the CN1008 with the FPC, be careful not to cut the FPC.

- (3) Disconnect the CN1008 and separate the REAR COVER ASS'Y.

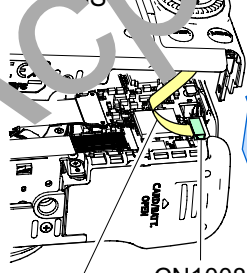
<Note on Reassembling>

- (1) Attach the REAR COVER ASS'Y as shown in the figure below.



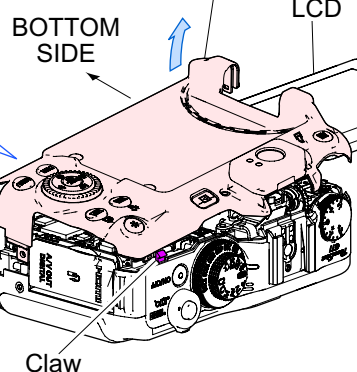
Note

REAR COVER ASS'Y



Be careful not to cut the FPC.

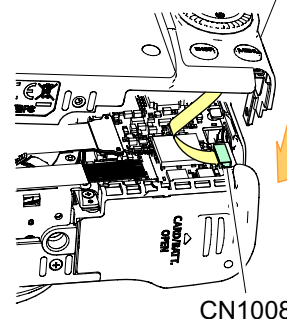
REAR COVER ASS'Y



Lift up the bottom part of the LCD side, disengage the claw, and then detach the REAR COVER ASS'Y.

Note on Reassembling (1)

REAR COVER ASS'Y



Fold the FPC as shown in the figure above, and attach the REAR COVER ASS'Y.

