

MODEL VARIATION

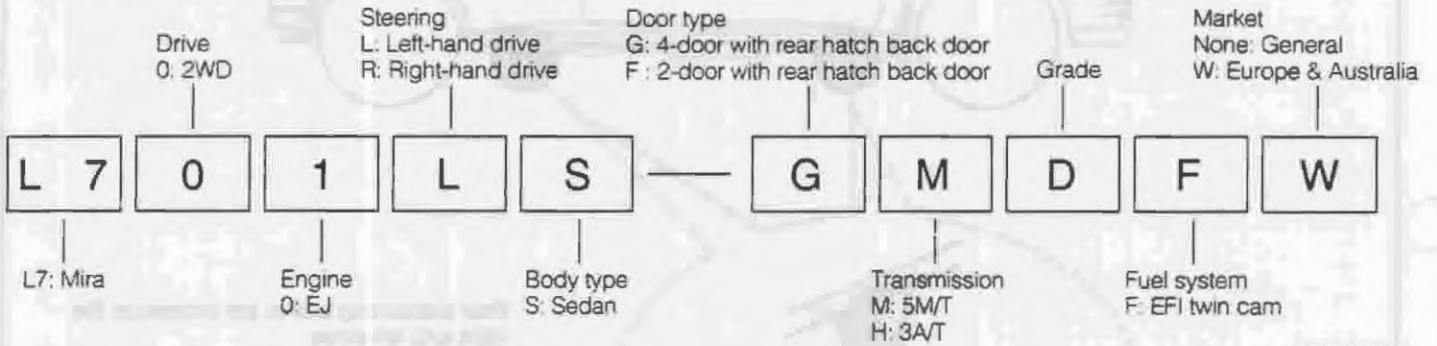
SUPPORTING POINTS OF SAFETY STANDARDS

Transmission	Body	General		Europe & Australia		
		LHD	RHD	LHD	LHD	RHD
		L701LS	L701RS	L701LS	L701LS	L701RS
5MT	2 Door*	F MDF	F MDF	F MDFW	F MRFW	F MDFW
	4 Door*	G MDF	G MDF	G MDFW	G MRFW	G MDFW
3AT	2 Door*	F H D F	F H D F	F H D F W	-	F H D F W
	4 Door*	G H D F	G H D F	G H D F W	-	G H D F W

*With rear hatch back door

LG100013-00000

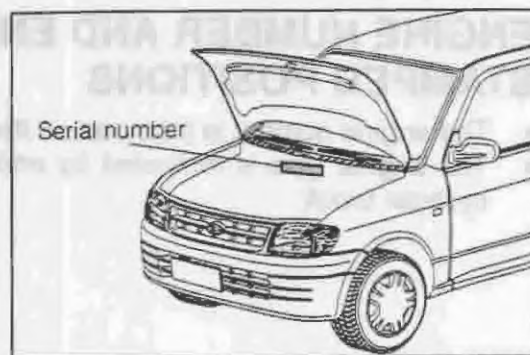
EXPLANATION OF VEHICLE MODEL CODE



LG100014-00000

CHASSIS SERIAL NUMBER STAMPED POSITION

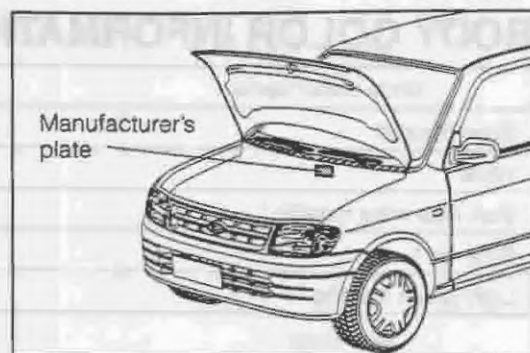
The chassis number is stamped on the cowl panel at the right side in the engine compartment.



LG100015-00005

MANUFACTURER'S PLATE POSITION

The manufacturer's plate is attached on the cowl panel.



LG100016-00005

CONTENTS OF MANUFACTURER'S PLATE

(1) General, Australian specifications

①	DAIHATSU MOTOR CO. LTD. JAPAN														
②	TYPE <input type="text"/>														
③	CHASSIS NO <input type="text"/>														
④	ENGINE <input type="text"/>														
	○	COLOR <input type="text"/>			TRIM <input type="text"/>	○									
⑥	BUILT DATE <input type="text"/>														
	ENGINE NO <input type="text"/>														
	ダイハツ工業株式会社														

- ① Manufacturer's name, Country
- ② Vehicle model
- ③ Chassis No.
- ④ Engine type
- ⑤ Engine displacement
- ⑥ Body colors
- ⑦ Trim code
- ⑧ Engine number
- ⑨ Manufacturer's name in Japanese
- ⑩ Gross vehicle weight
- ⑪ Gross combination weight
- ⑫ Maximum permissible front axle weight
- ⑬ Maximum permissible rear axle weight
- ⑭ Production month-year (Only for AUS. spec.)
- ⑮ Authorized number of W.V.T.A (Only for European spec.)

(2) European Specification

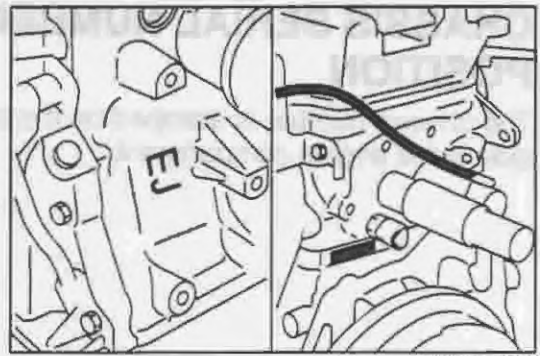
①	DAIHATSU MOTOR CO..LTD														
	<input type="text"/>														
	<input type="text"/>														
	<input type="text"/> Kg <input type="text"/>														
	○	<input type="text"/> Kg <input type="text"/>			○										
	<input type="text"/> 1 <input type="text"/> Kg <input type="text"/>														
	<input type="text"/> 2 <input type="text"/> Kg <input type="text"/>														
②	TYPE <input type="text"/>														
④	ENGINE <input type="text"/> COLOR <input type="text"/>														

LG100017-00007

GI-14

ENGINE NUMBER AND ENGINE TYPE STAMPED POSITIONS

- The engine number is stamped on the cylinder block.
- The engine type is indicated by embossed letters on the cylinder block.



LG100018-00008

BODY COLOR INFORMATION

Body colour name	Colour code
Silver metallic	S07
White	W09
Dark blue mica metallic *	B42
Pure red *	R29
Light green metallic *	G27

* New color

LG100019-00000

COLOR CODE TABLE

	AKZO	DUPONT	GLASURIT	ICI	SPIES HECKER	STANDOX
Silver Metallic	DAHS07	L8842	DAI S07	B127B	97076	S07
White	DAHWO9	K9344	DAI W09	XM48	16461	W09
Dark blue mica Metallic	DAHB42	F7984	DAI B42	MXR2B	56568	B42
Pure red	DAHR29	F7986	DAI R29	MXR4	65509	R29
Light green Metallic	DAHG27	F7985	DAI G27	MEX3B	34453	G27

LG100020-00000

MAINTENANCE REQUIREMENTS



MAINTENANCE

MAINTENANCE REQUIREMENTS ... MA- 2
MAINTENANCE SCHEDULE MA- 3
 SCHEDULE FOR
 SEVERE DRIVING **MA- 5**
MAINTENANCE OPERATION MA- 6
 AIR CLEANER ELEMENT **MA- 6**
 VALVE CLEARANCES **MA- 6**
 ENGINE OIL & OIL FILTER **MA- 6**
 FUEL FILTER **MA- 7**
 FUEL LINE & CONNECTIONS **MA- 8**
 ENGINE COOLANT **MA- 8**
 DRIVE BELTS **MA- 9**
 TIMING BELT **MA-10**
 SPARK PLUGS **MA-10**
 BLOW-BY GAS
 RECIRCULATION HOSE **MA-10**
 CHARCOAL CANISTER **MA-10**
 EVAPORATIVE EMISSION
 HOSES **MA-11**
 EXHAUST PIPE
 & MUFFLER MOUNTING **MA-11**
 CLUTCH **MA-12**
 AUTOMATIC TRANSMISSION
 OIL COOLER HOSES **MA-12**

AUTOMATIC TRANSMISSION
 FLUID **MA-12**
MANUAL TRANSMISSION OIL MA-13
 DRIVE SHAFT BOOT **MA-13**
 STEERING LINKAGE **MA-13**
 STEERING GEAR BOX **MA-14**
 POWER STEERING PUMP
 FLUID HOSE **MA-14**
 SHOCK ABSORBERS **MA-14**
 SUSPENSIONS **MA-14**
 WHEEL BEARINGS **MA-14**
 WHEEL ALIGNMENT **MA-15**
 BRAKE PEDAL **MA-15**
 PARKING BRAKE **MA-15**
 FRONT BRAKE DISC
 & DISC PAD **MA-16**
 BRAKE HOSES & TUBES **MA-16**
 P & B VALVE **MA-16**
 BRAKE FLUID **MA-16**
 BRAKE DRUMS & LININGS **MA-17**
 BRAKE BOOSTER
 VACUUM HOSES **MA-17**
 MASTER CYLINDER **MA-17**
 WHEEL CYLINDERS **MA-17**
 WHEEL HUB NUTS **MA-18**

MAINTENANCE SCHEDULE

NOTE:

- Perform the periodical maintenance at the specified mileage or the time whichever comes first, unless otherwise specified.
- Continue to perform the periodical maintenance after 100,000 km (60,000 miles) at the same intervals as before 100,000 km.
- If the vehicle should be operated under severe driving conditions, operated occasionally, operated in dusty areas, repeating short trips, operated under extremely cold climate and/or on salted roads, it is necessary to perform some maintenance items more frequently than the regular maintenance schedule.
- This maintenance schedule was prepared based on requirements mentioned in the owner's manual which are to be performed by the Daihatsu owner thoroughly.

○---Check or inspect. ●---Change or replace.

Section	Item	What to do	Inspection interval	×1000 km	1	10	20	30	40	50	60	70	80	90	100	See page
				×1000 miles	0.6	6	12	18	24	30	36	42	48	54	60	
				Years	—	0.5	1	1.5	2	2.5	3	3.5	4	4.5	5	
Engine	Air cleaner element	Cleaning Check ● Damage				○			●		○		●		○	MA-6
	Valve clearance	Check & adjustment							○				○			MA-6
	Engine oil & oil filter	Change (Use API: SG or higher grade)		Every 12,000 km												MA-6
	Fuel filter	Change		Every 100,000 km												MA-7
	Fuel line & connections (Including fuel hoses)	Check ● Crack ● Tightness ● Leakage ● Damage		Every 40,000 km												MA-8
	Coolant (Long-life coolant)	Change		Every two years												MA-8
	Drive belt (Alternator, water pump, power steering)	Check ● Tension ● Crack ● Damage				○			○			○			○	
	Timing belt	Change		Every 100,000 km												MA-10
	Spark plug	Cleaning & check ● Condition ● Gap ● Damage				○			○			○			○	MA-10
Exhaust emission control system	Blow-by gas recirculation hose (Positive crankcase ventilation hose)	Check ● Connection ● Damage							○					○		MA-10
	Charcoal canister	Check ● Function ● Damage							○					○		MA-10
	Evaporative emission hoses	Change		Every eight years												MA-11
	Exhaust pipe & muffler mounting	Check ● Tightness ● Damage				○			○			○			○	MA-11

* Replace every 10,000 km when API SF grade oil is used.

MA-4

○---Check or inspect. ●---Change or replace.

Section	Item	What to do	Inspection interval	×1000 km	1	10	20	30	40	50	60	70	80	90	100	See page
				×1000 miles	0.6	6	12	18	24	30	36	42	48	54	60	
				Years	—	0.5	1	1.5	2	2.5	3	3.5	4	4.5	5	
Power train system	Clutch	Check • Free travel • Reserve travel • Damage					○		○		○		○		○	MA-12
	Manual transmission	Change • Oil							●				●			MA-13
	Automatic transmission	Change • Fluid	Every 80,000 km												MA-12	
	Automatic transmission Oil cooler hose	Check • Crack, scratch, cut, twist and swelling	Every 40,000 km												MA-12	
	Drive shaft boot	Check • Damage				○		○		○		○		○		○
Suspension system	Shock absorber	Check • Function • Oil leakage (Shock absorber) • Damage				○		○		○		○		○		MA-14
	Suspension	Check • Tightness • Damage • Rattle						○					○			MA-14
Running system	Wheel bearing	Check • Tightness • Damage • Rattle						○					○			MA-14
Steering system	Steering linkage, gear box	Check • Free play (Steering wheel) • Tightness • Rattle • Damage				○		○		○		○		○		MA-13
	Wheel alignment	Check • Toe-in						○				○				MA-15
	Fluid hose	Check • Crack, scratch, cut, twist and swelling	Every 4 years												MA-14	

LMA0004-00000

○...Check or inspect ●...Change or replace

Section	Item	What to do	Inspection interval	×1000 km	1	10	20	30	40	50	60	70	80	90	100	See page
				×1000 miles	0.6	6	12	18	24	30	36	42	48	54	60	
				Years	—	0.5	1	1.5	2	2.5	3	3.5	4	4.5	5	
Brake system	Brake pedal & Parking brake	Check ● Free play (Brake pedal) ● Reserve travel (Brake pedal) ● Working travel (Parking brake)					○	○	○	○	○	○	○	○	○	MA-15
	Disc & Disc pad	Check ● Wear ● Damage				○	○	○	○	○	○	○	○	○	○	MA-16
	Brake hose, tube and P & B valve	Check ● Leakage (Fluid level, connection) ● Loose clamp ● Damage				○	○	○	○	○	○	○	○	○	○	MA-16
	Brake fluid	Change								Every 2 years						MA-16
	Brake drum & lining	Check ● Wear ● Damage				○	○	○	○	○	○	○	○	○	○	MA-17
	Brake booster vacuum hose	Check									Every 4 years					
Chassis & body	Master & wheel cylinder	Check ● Leakage								Every 2 years						MA-17
	Wheel hub nut, other bolts & nuts	Check ● Tightness				○	○	○	○	○	○	○	○	○	○	MA-18

LMA00005-00000

SCHEDULE FOR SEVERE DRIVING

○...Check or inspect ●...Change or replace

Section	Item	What to do	Inspection interval	×1000 km	1	10	20	30	40	50	60	70	80	90	100	See page
				×1000 miles	0.6	6	12	18	24	30	36	42	48	54	60	
				Years	—	0.5	1	1.5	2	2.5	3	3.5	4	4.5	5	
Engine	Engine oil & oil filter	Change								Every 5,000 km						MA-6
	Air cleaner element	Check & cleaning ● Damage Change								Check and cleaning: Every 5,000 km Replacement: Every 20,000 km						MA-6
Exhaust emission control system	Exhaust pipe and mounting	Check ● Tightness ● Damage				○	○	○	○	○	○	○	○	○	○	MA-11
Power train system	Manual transmission	Change ● Oil								Every 25,000 km						MA-13
	Automatic transmission	Change ● Fluid								Every 50,000 km						MA-12
Steering system	Steering linkage	Check ● Tightness ● Damage				○	○	○	○	○	○	○	○	○	○	MA-13
Brake system	Disc & disc pad	Check ● Wear ● Damage				○	○	○	○	○	○	○	○	○	○	MA-16
	Brake drum & lining	Check ● Wear ● Damage				○	○	○	○	○	○	○	○	○	○	MA-17

LMA00006-00000

MAINTENANCE OPERATION

AIR CLEANER ELEMENT

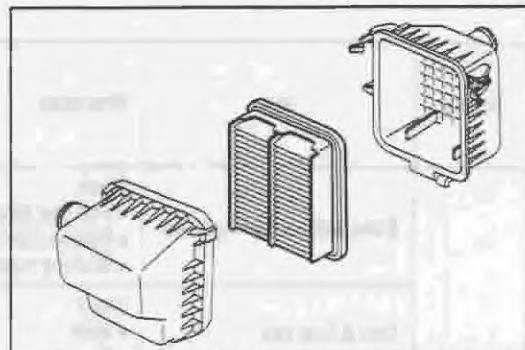
1. Perform checking every two years or 40,000 kilometer running, whichever comes first.
2. If the vehicle has been run under severe driving environments, perform cleaning every 5,000 kilometer running. Also, replace the air cleaner element every 20,000 kilometer running.
3. Take out the air cleaner element from the air cleaner case. Check the element for oil contamination or restriction.
4. When cleaning, blow compressed air first from the downstream side of the air cleaner element. Then, blow compressed air from the upstream side so that dust or other contamination may be removed.

WARNING:

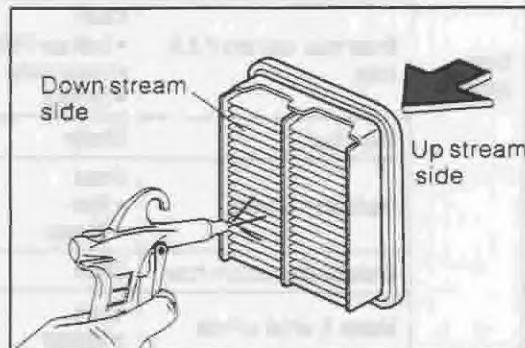
- Be sure to wear safety goggles during this operation.

CAUTION:

- The pressure of the compressed air should not exceed 392 kPa.



LMA0007-0001



LMA0008-0002

VALVE CLEARANCES

1. Perform checking every two years or 40,000 kilometer running, whichever comes first.

NOTE:

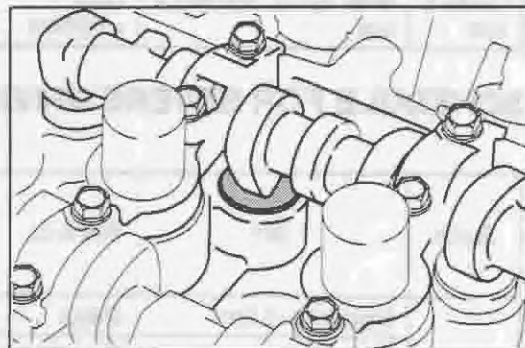
- For the adjustment procedure, refer to Section EM.

Specified Values:

Intake: 0.18 ± 0.05 mm

Exhaust: 0.25 ± 0.05 mm

(During engine cold period)



LMA0009-0003

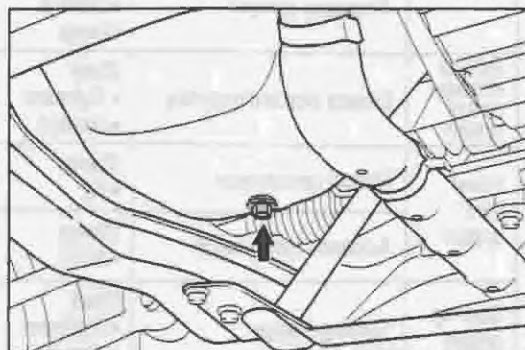
ENGINE OIL & OIL FILTER

1. Change engine oil and replace the oil filter every 12,000 kilometer running.
2. If the vehicle has been run under severe driving environments, change engine oil and replace the oil filter every 5,000 kilometer running.
3. Park the vehicle at a level place. Place a suitable container under the engine oil drain plug and oil filter.

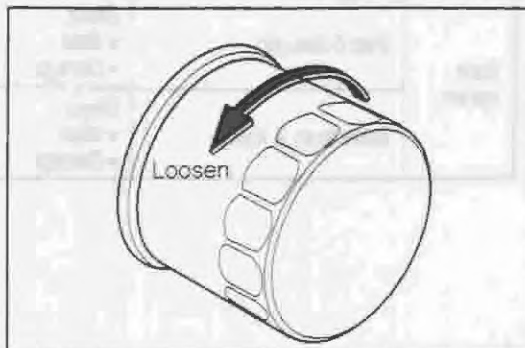
WARNING:

- There is the possibility that you may burn yourself during this operation when the engine is hot.

4. Remove the oil filter cap so that the engine oil may be drained easily. Then, remove the drain plug and drain the engine oil.
5. Remove the oil filter.



LMA0010-0004



LMA0011-0005