

Gymnopedie No. 2

=

for Piano and Double Bass
Pure Sheet Music
By Lars Christian Lundholm

The image displays a musical score for 'Gymnopedie No. 2' by Lars Christian Lundholm, arranged for piano and double bass. The score is presented in two systems. The first system consists of a grand staff with a treble clef on the upper staff and a bass clef on the lower staff. The piano part (treble clef) features a series of chords in the right hand, with dynamics starting at *p* and ending at *pp*. The double bass part (bass clef) plays a simple, rhythmic accompaniment of quarter notes. The second system includes a separate staff for the double bass, showing a melodic line with a slur and dynamics ranging from *p* to *pp*. Below this is another grand staff for the piano, mirroring the structure of the first system with chords in the right hand and a quarter-note accompaniment in the left hand.

Gymnopedie no. 2

Satie

Arranged by Lars Christian Lundholm

Lent et Triste

Gymnopedie No. 2

for Piano and Double Bass
Pure Sheet Music
By Lars Christian Lundholm

pure:
SHEET MUSIC

Gymnopedie no. 2

Satie

Arranged by Lars Christian Lundholm

Lent et Triste

4



Gymnopedie No. 2



5 *p*

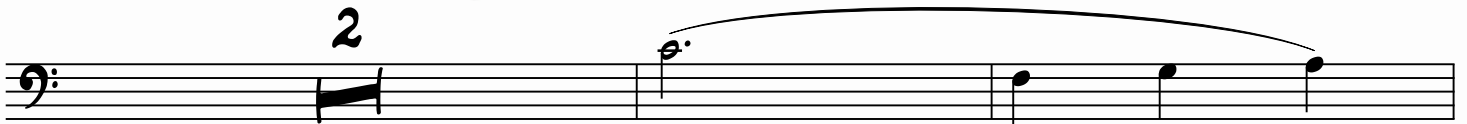
pp



9

for Piano and Double Bass
Pure Sheet Music
By Lars Christian Lundholm

pp



13

f



17



21



25

p

f



29

ff

Gymnopedie No. 2 for Piano and Double Bass

Composed in 1888 by Erik Satie, the Gymnopedies are considered with their atmospheric mood a very important inspiration to modern ambient music. Dedicated to Conrad Satie it embodies the spirit of French impressionism and has been featured in many film sound tracks like Louis Malle's film *My Dinner with Andre* and *The Fire Within* by the same director. Satie was inspired by reading Gustave Flaubert's novel *Salammbô* and the composers first attempt at cutting himself loose from the conventional 19th century salon music.

Sheet Music for Double Bass accompanied by Piano arranged by Lars Christian Lundholm..

Gymnopedie No. 2 is also known by alternative title: *Trois Gymnopedies, Lent et triste*.

- Level: Easy
- Tempo: Slow
- Composer: Erik Satie
- Genre: Impressionistic
- Year Composed: 1888
- Instrumentation: Piano and Double Bass
- Score Type: Score and 1 Part
- Pages (approximate): 8

Please return and search for more sheet music for Piano and Double Bass, for instance:

- Daisy Bell for Piano and Double Bass
- I've Been Working On the Railroad for Piano and Double Bass
- La Cucaracha for Piano and Double Bass
- Aura Lee for Piano and Double Bass

About Puresheetmusic.com.

Puresheetmusic is the first and leading seller of sheet music as ebooks worldwide including iTunes.

Puresheetmusic has been number 1 on the iTunes arts and entertainment best seller book chart in more than a dozen countries including:

- United Kingdom
- Germany
- Australia

This sheet music is licensed for your personal enjoyment only. It may not be re-sold or given away to other people. If you would like to share this sheet music with another person, please purchase an additional copy for each recipient. If you're reading this sheet music and did not purchase it, or it was not purchased for your use only, then please purchase your own copy. Thank you for respecting the hard work put into this arrangement.

Copyright © 2015 www.Puresheetmusic.com