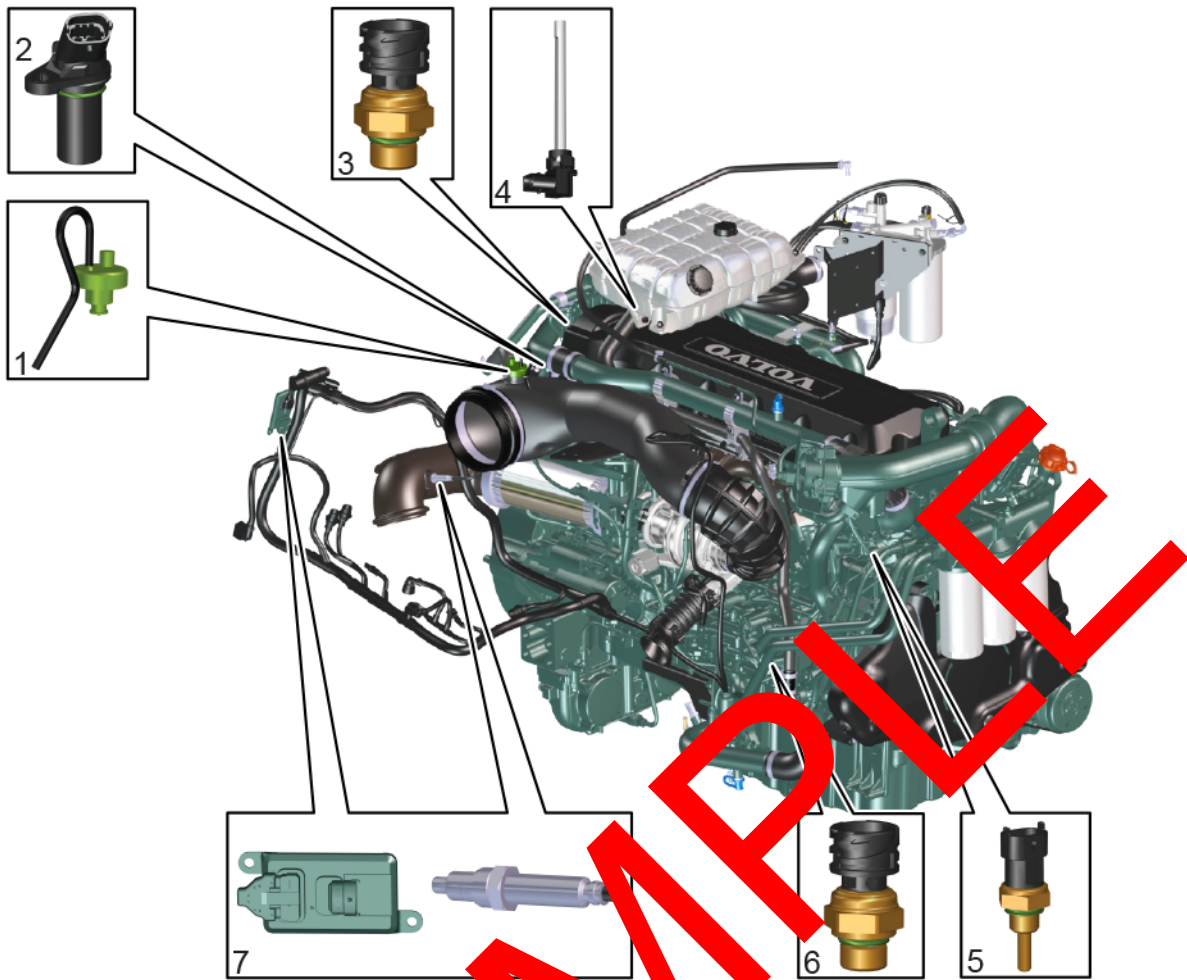


Component position 2

Engine



V1149733

Figure 1
Engine D11

| Pos. | Designation | Description | Belongs to wiring diagram |
|------|-------------|------------------------------------------------|--------------------------------------|
| 1 | SE2501 | Sensor, ambient temperature | Wiring diagram WD207 |
| | SE2502 | Monitor, air filter, pressure | Wiring diagram WD207 |
| 2 | SE2703 | Sensor, camshaft rpm | Wiring diagram WD207 |
| 3 | SE2511 | Sensor, exhaust back-pressure | Wiring diagram WD204 |
| 4 | SE2603 | Monitor, coolant level | Wiring diagram WD207 |
| 5 | SE2606 | Sensor, coolant temperature, engine | Wiring diagram WD206 |
| 6 | SE2203 | Sensor, engine oil pressure | Wiring diagram WD206 |
| 7 | SE2513 | Sensor, NO _x (nitrogen oxides) in | Wiring diagram WD241 |
| 8 | PWM2503 | PWM-valve, control exhaust recirculation (EGR) | Wiring diagram WD240 |
| 9 | MO3301 | Starter motor | Wiring diagram WD304 |

27. Install the exhaust pipe between the turbo and the muffler. Use new gaskets and make sure that they end up in correct positions against the flanges.

See [Inlet and exhaust system, tightening torques](#).

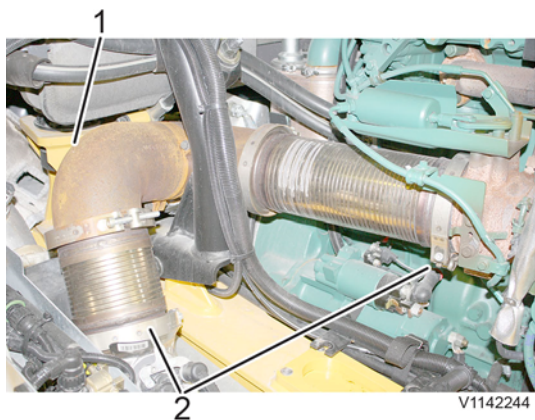


Figure 24

1. Attaching bolts
2. V-clamps

28. Install the air cleaner with bracket, tighten the attaching bolts against the frame. Weight: approx.: 38 kg (84 lbs)

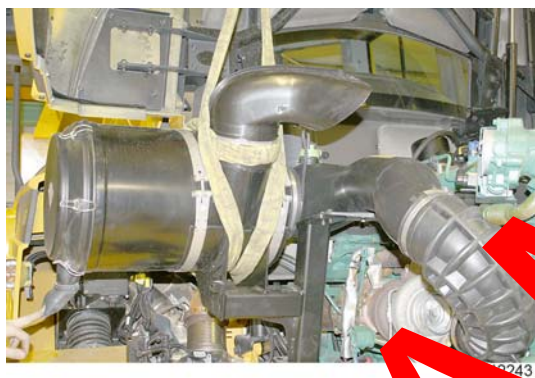


Figure 25

29. Install the connection for the compressor. Install the clamps at the air cleaner and the turbo's U-shaped rubber tube. Install the sensors for temperature and pressure, **SE2501** and **SE2502**.

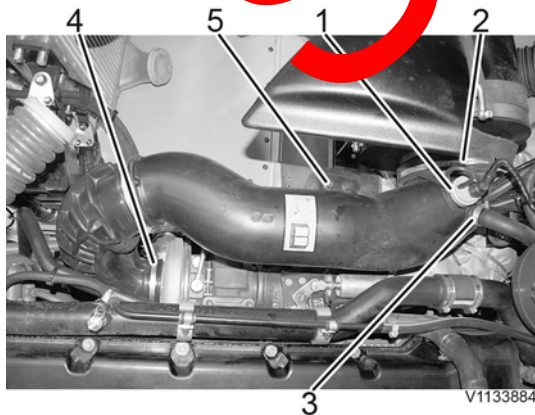


Figure 26

1. Sensor SE2501 and SE2502
2. Clamp against air cleaner

Figure 2

The measurements between centre of the brake disc and the edge of brake caliper must be equal on both sides

8. Adjust the brake caliper sideways. The brake pads should be at the same height as, or slightly below, the brake disc's height. The line on the brake pads' edge shall be parallel with the line on the brake disc's edge.
9. Install bolts and the nut plates in the bracket that hold the brake caliper against the frame. Tighten the bolts by hand.

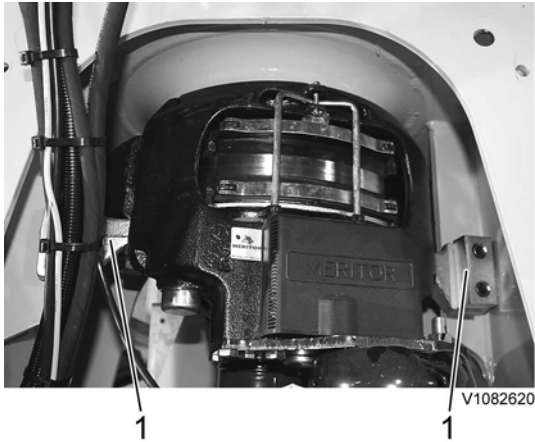


Figure 3

1. Bracket

10. Apply the parking brake with the button on the control panel. As an alternative, apply the parking brake by screwing out the nut on the caging bolt counter-clockwise.

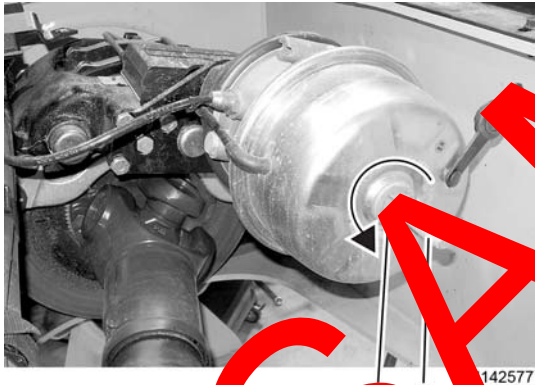


Figure 4

1. Nut
2. Caging bolt

11. Check that the brake caliper is still centred, adjust as needed.
12. Torque-tighten the bolts that hold the brake caliper to the frame. Tightening torque: see [Parking brake, tightening torque](#)

Brake pads, adjusting

13. Release the parking brake with the button on the control panel. As an alternative, release the parking brake by turning the nut on the caging bolt clockwise until it bottoms out.