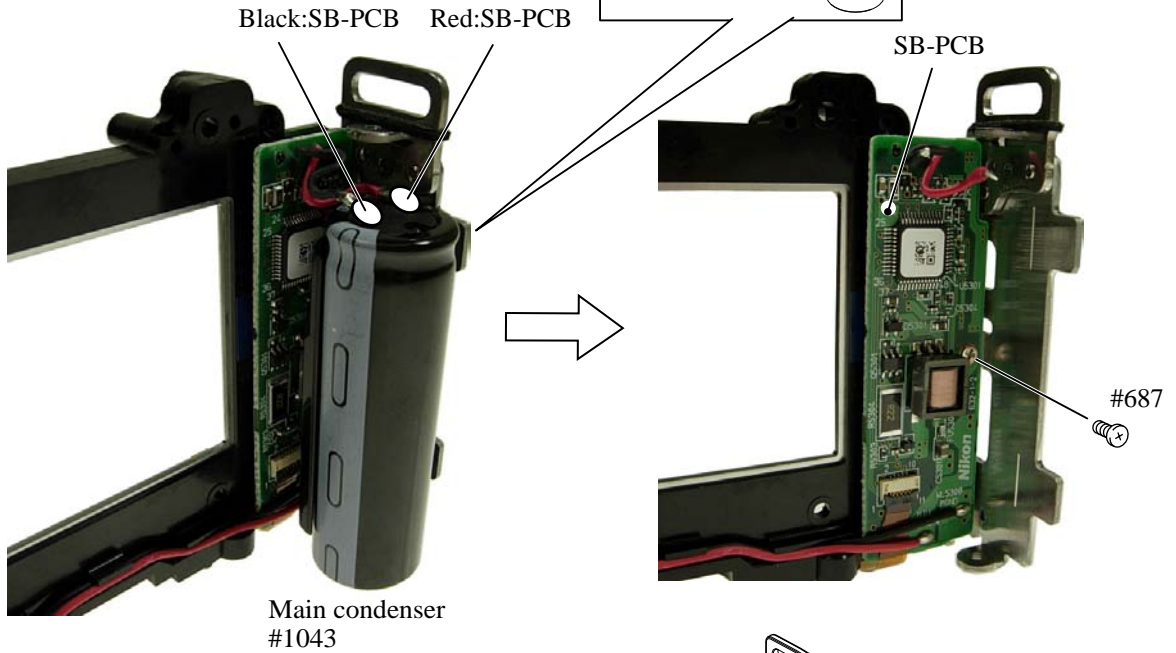
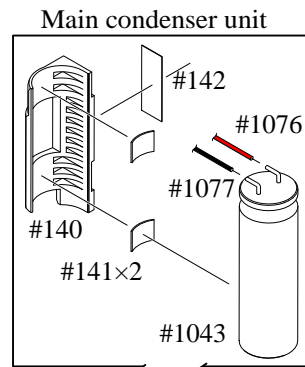
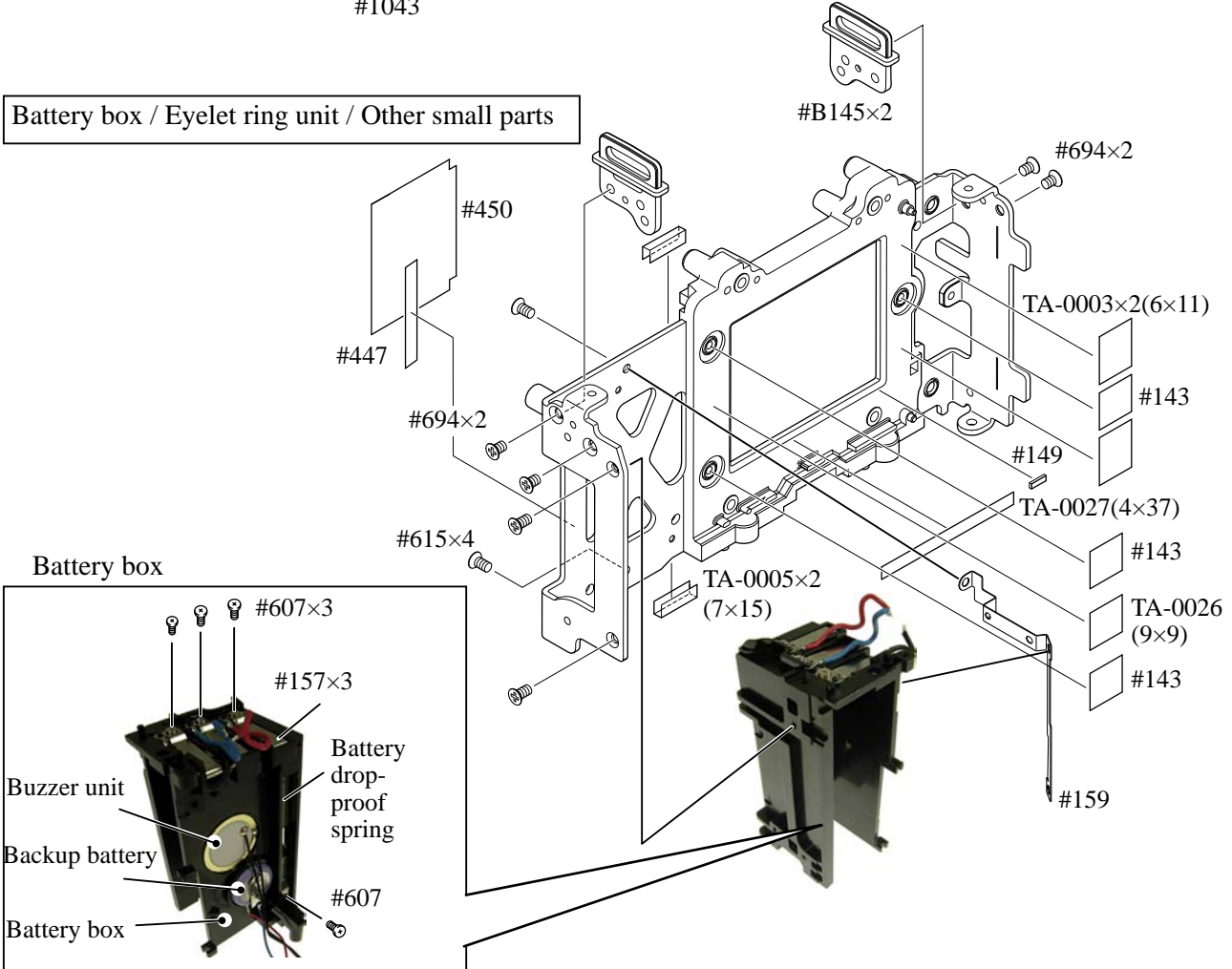


SB PCB

- Unsolder the two wires of the main condenser unit.
- Remove the main condenser that is attached on with the adhesive double-coated tape.
- Take out the screw (#687).
- Remove the SB PCB.

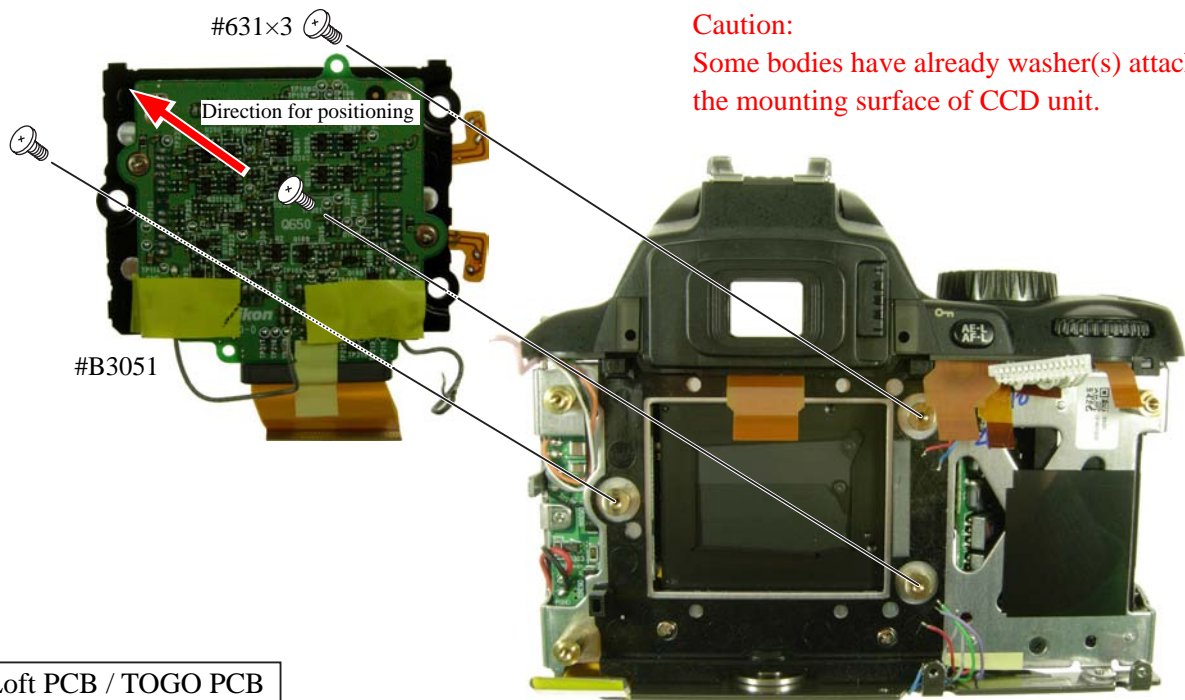


Battery box / Eyelet ring unit / Other small parts



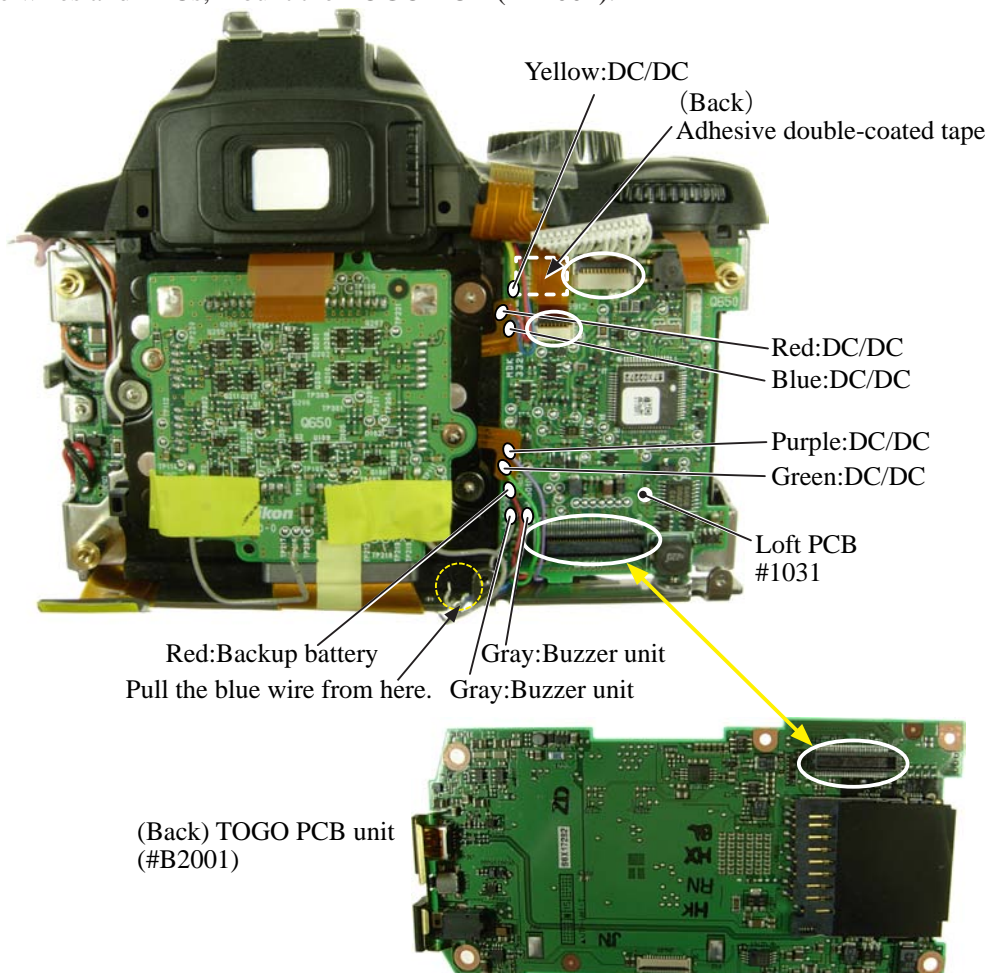
CCD unit

- Mount the CCD unit (#B3051) by following the direction for positioning, and fix it with three screws (#631).



Loft PCB / TOGO PCB

- Attach the loft PCB partially with the adhesive double-coated tape.
- Solder the eight wires.
- Connect the two FPCs to each connector.
- By watching the wires and FPCs, mount the TOGO-PCB (#B2001).



A

B

INC

VBA21001-R.3753.A

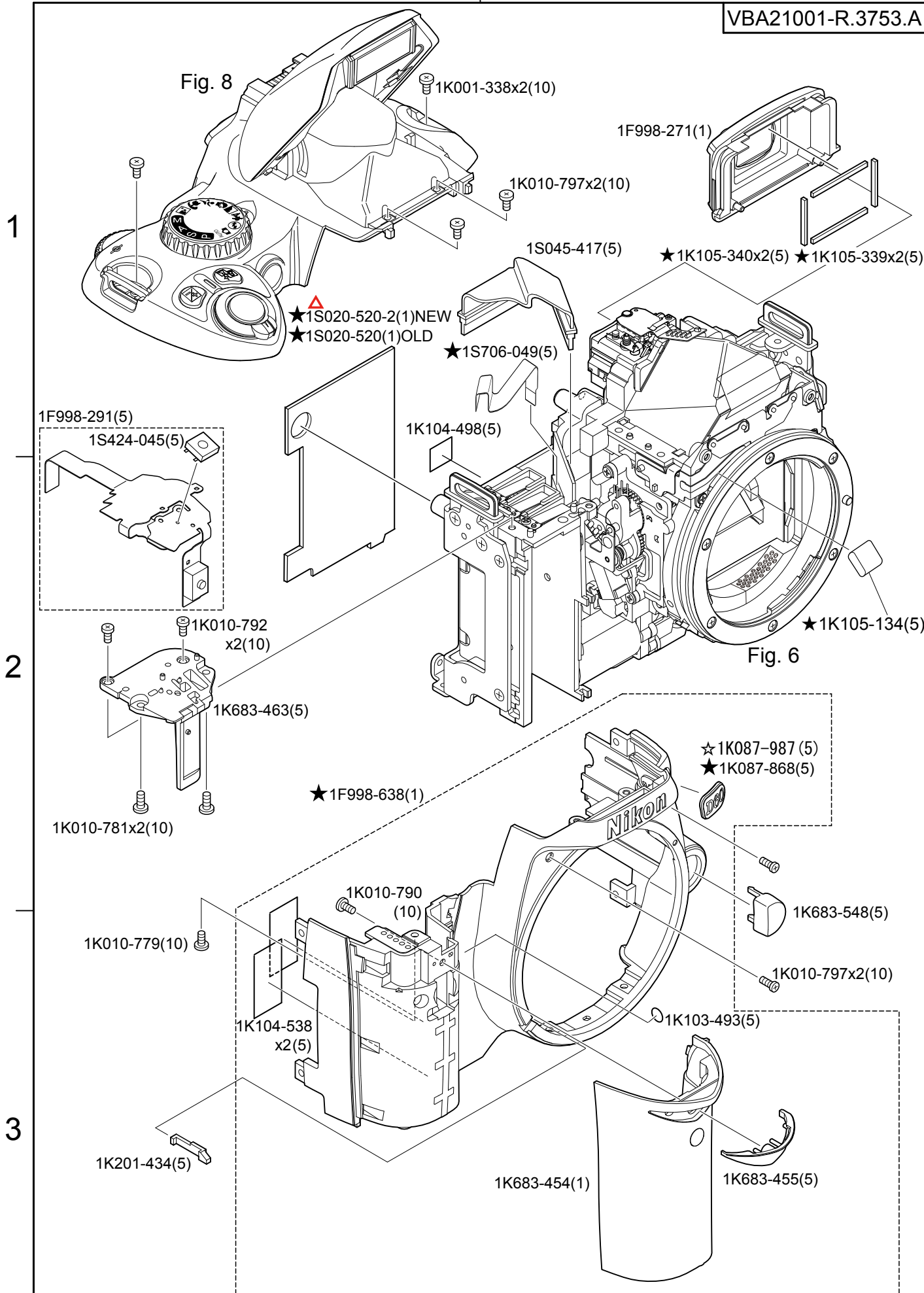


Fig. 8

Fig. 6

1

2

3

☆D60 (Ritz) の専用部品 (Exclusive parts for Ritz D60)

★D60の専用部品

★Exclusive parts for D60

Fig. 9