



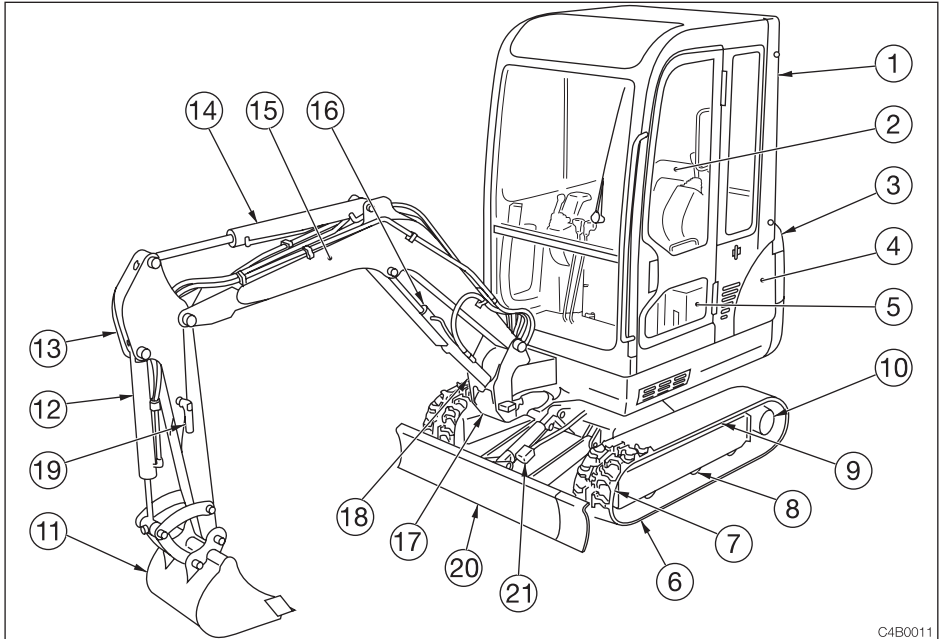
# CONTROLS

---

<b>Names of Components.....</b>	<b>36</b>
<b>Doors and Covers.....</b>	<b>38</b>
<b>Seat and Seat Belt.....</b>	<b>43</b>
<b>Instrument Panel.....</b>	<b>45</b>
<b>Switches.....</b>	<b>47</b>
<b>Levers and Pedals.....</b>	<b>49</b>
<b>Accessories.....</b>	<b>53</b>

---

SAMPLE



C4B0011

**Upperstructure**

- 1. Cab
- 2. Seat
- 3. Engine hood
- 4. Fuel tank
- 5. Hydraulic tank

**Undercarriage**

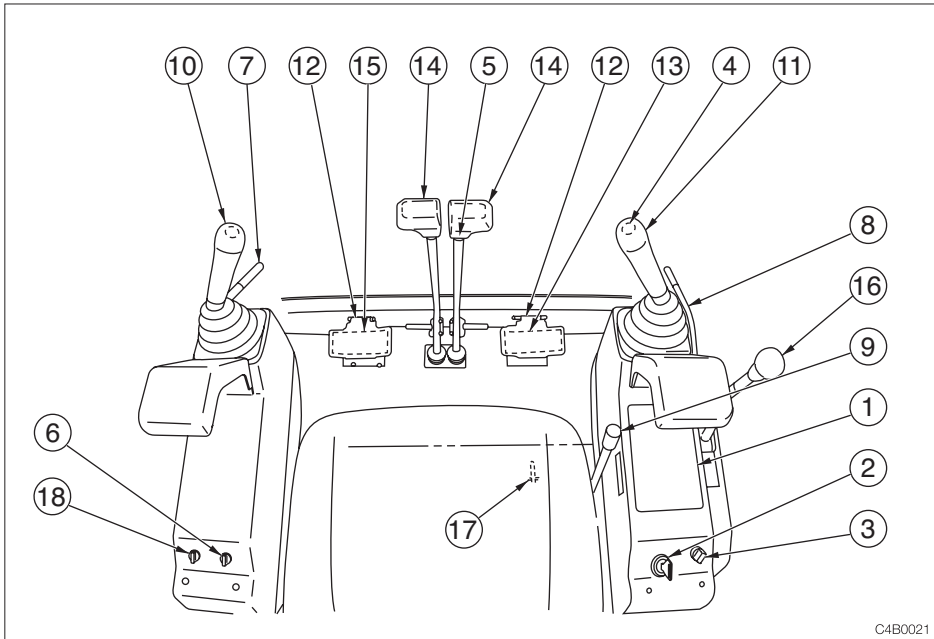
- 6. Crawler belt
- 7. Idler
- 8. Track roller
- 9. Shoe slide
- 10. Travel motor

**Working equipment**

- 11. Bucket
- 12. Bucket cylinder
- 13. Arm
- 14. Arm cylinder
- 15. Boom
- 16. Boom cylinder
- 17. Boom bracket
- 18. Swing cylinder
- 19. Auxiliary hydraulic lines
- 20. Dozer blade
- 21. Blade cylinder

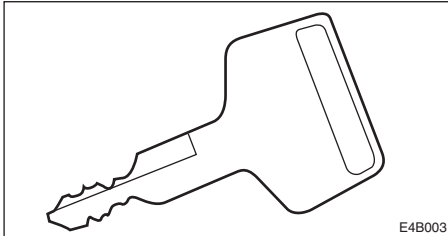


## Names of Components



C4B0021

- |                               |                             |
|-------------------------------|-----------------------------|
| 1. Instrument panel           | 10. Left operating lever    |
| 2. Starter switch             | 11. Right operating lever   |
| 3. Light switch               | 12. Pedal lock              |
| 4. Horn switch                | 13. Boom swing pedal        |
| 5. Travel speed switch        | 14. Travel lever            |
| 6. Wiper switch (Cab)         | 15. Auxiliary pedal         |
| 7. Safety lock lever          | 16. Blade lever             |
| 8. Safety lock lever (Canopy) | 17. Selector lever          |
| 9. Throttle lever             | 18. Heater fan switch (Cab) |

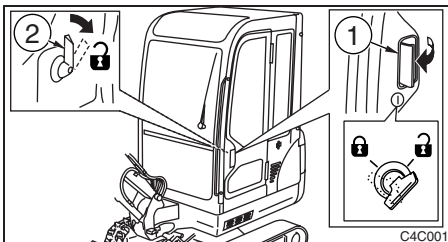
**Starter Key**

The starter key is used not only to start and stop the engine, but also to lock and unlock the cab door, engine hood, fuel cap, manual storage compartment, storage box and tool box.

**Cab Door (Cab)****! WARNING**

When mounting and dismounting the cab, first open the door fully to the locked position and check that it does not move.

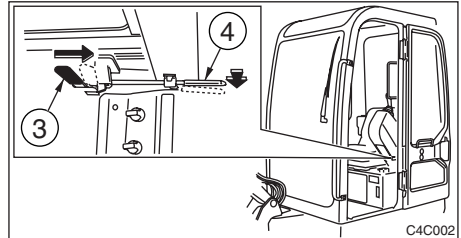
Open the door fully and press it against the catch at the back of the door to lock it in place. Always lock the door when mounting and dismounting and when operating the machine.

**Opening**

1. Insert the starter key and turn it clockwise to unlock the door.
2. Pull the knob (1) towards you and open the door.

To open the door from inside the cab, push the lever (2) to the front.

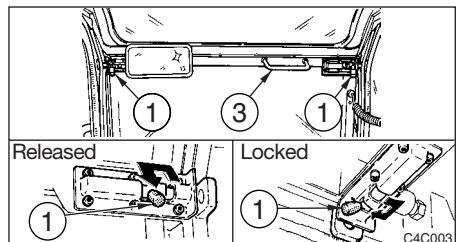
3. Open the door fully and press it against the cab to lock it in place.

**Closing**

1. Either push release lever (3) to the front or lower release lever (4).
2. Close the released door.

**Front Window (Cab)****! WARNING**

- Grasp the handles firmly with both hands when opening and closing the front window. Your head or hands may get caught if they slip.
- If you open the front window, be sure to lock it in place with the lock pins on the left and right sides. The window may fall if it is not locked in place.

**Opening**

1. Park on a level surface and stop the engine.