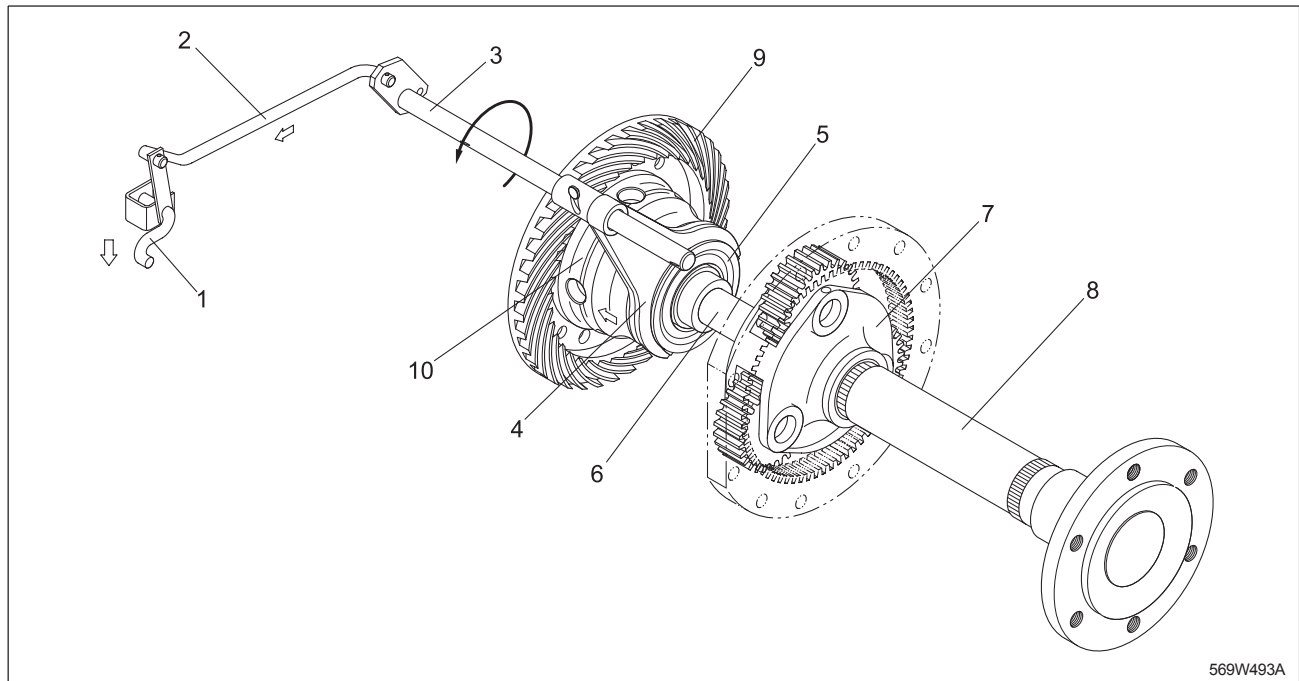


### 6.3 LOCKING OF THE DIFFERENTIAL GEAR



569W493A

#### a. Related Parts with the Operation of the Differential Gear

- (1) Differential Pedal
- (2) Differential Rod
- (3) Differential Mounting Fork Shaft
- (4) Differential Mounting Fork
- (5) Differential Mounting Shift
- (6) 13 Gear Shaft
- (7) Planetary Gear Assembly
- (8) Rear Axle
- (9) 39 Spiral Bevel Gear
- (10) Differential Gear Assembly

#### b. Operation Principle of the Differential Gear

If differential pedal (1) is pressed down, the differential rod connected to the pedal gets pulled forward and differential mounting fork shaft (3) gets rotated. Since differential mounting fork (4) is moved to the left and connected with the dog of differential mounting shift (5) through the dog's groove of differential gear assembly (10), while differential function is not operated, along with 13 gear shafts (left and right) (6) revolved together. If differential lock is operated, 13 gear shafts both left and right rotate at the same speed and transmit the same capacity of power to the rear axle.

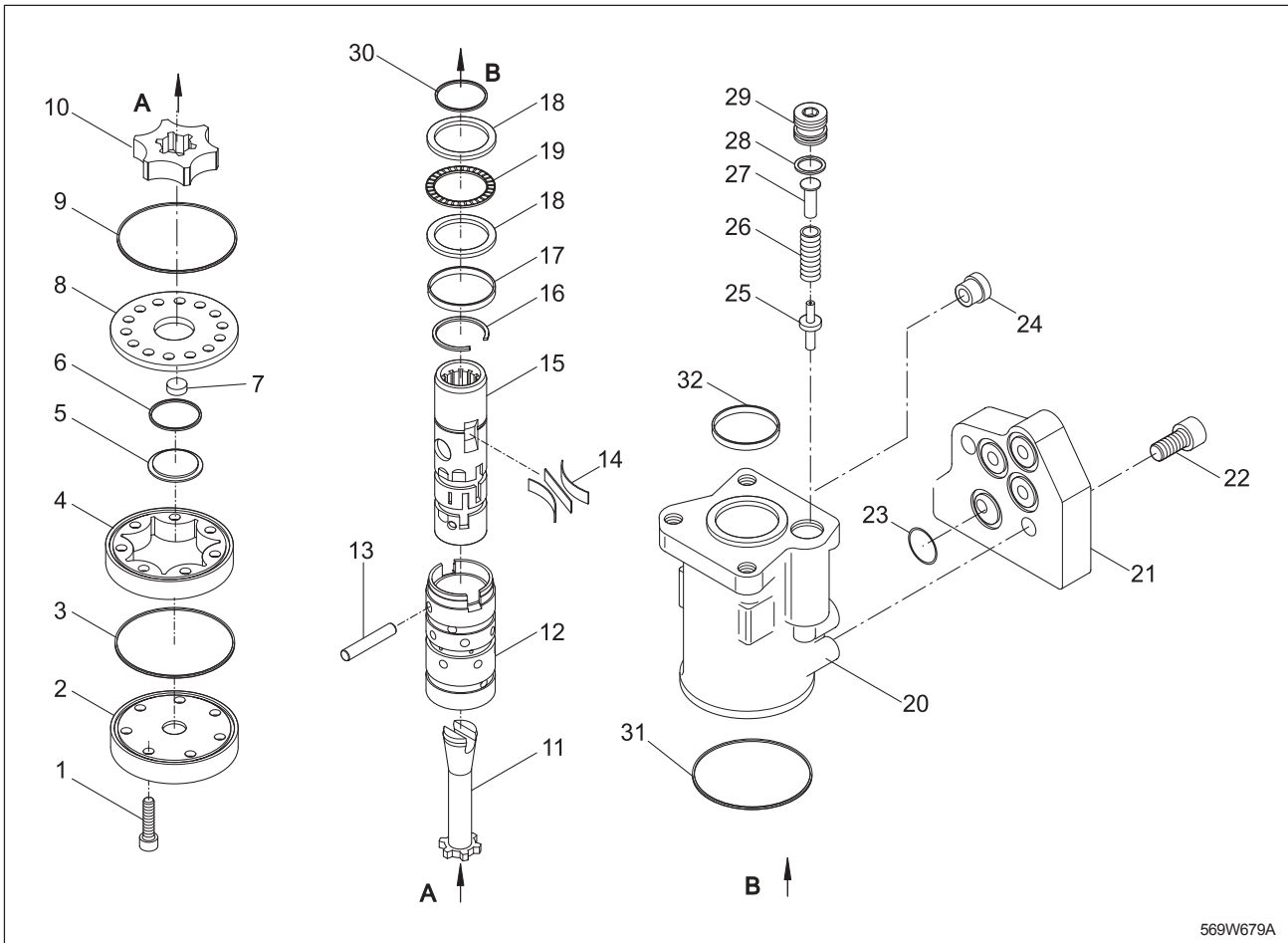


#### CAUTION

- When running while the differential lock is operated, do not turn the steering wheel to toe left or right.
- If the steering wheel is turned to the left or right, the differential lock may be damaged because the rotation speed differs between the left and the right wheel.

3.5 TO DISASSEMBLING AND TO ASSEMBLE

POWER STEERING UNIT



569W679A

- |                  |                       |                              |                |
|------------------|-----------------------|------------------------------|----------------|
| (1) Screw        | (9) O-Ring            | (17) Retainer Ring           | (25) Poppet    |
| (2) End Cap      | (10) Rotor            | (18) Bearingless             | (26) Spring    |
| (3) O-Ring       | (11) Drive            | (19) Needle Bearing          | (27) Poppet    |
| (4) Stator       | (12) Sleeve           | (20) Housing                 | (28) O-Ring    |
| (5) Spacer       | (13) Pin              | (21) Housing                 | (29) Plug      |
| (6) O-Ring       | (14) Centering Spring | (22) Screw                   | (30) O-Ring    |
| (7) Spacer       | (15) Spool            | (23) O-Ring                  | (31) O-Ring    |
| (8) Spacer Plate | (16) stop Ring        | (24) Inlet Check Valve Ass'y | (32) Dust Seal |