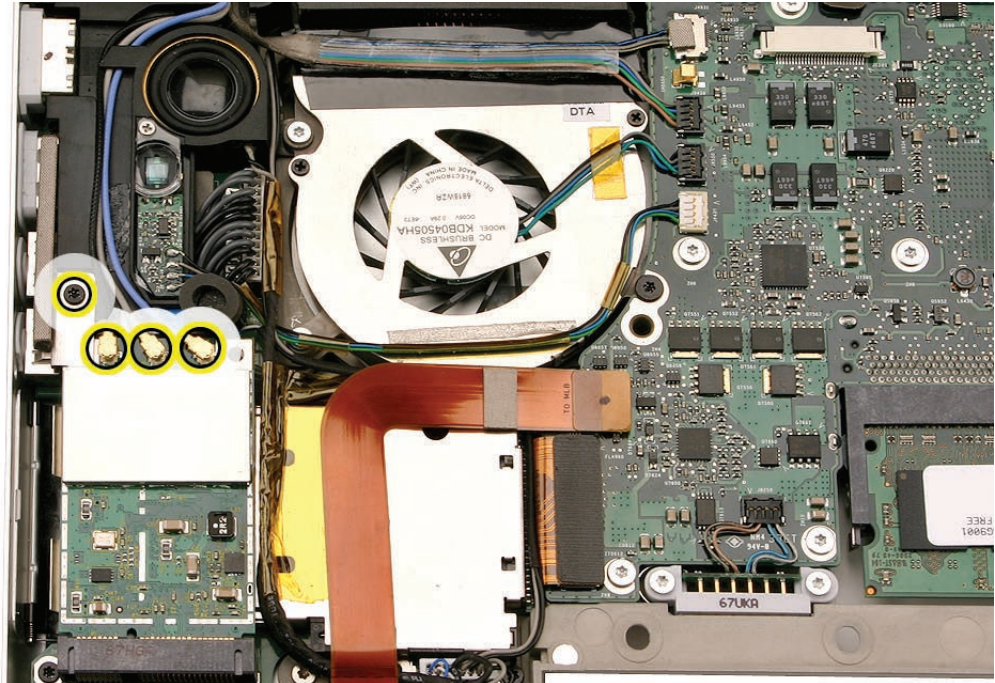
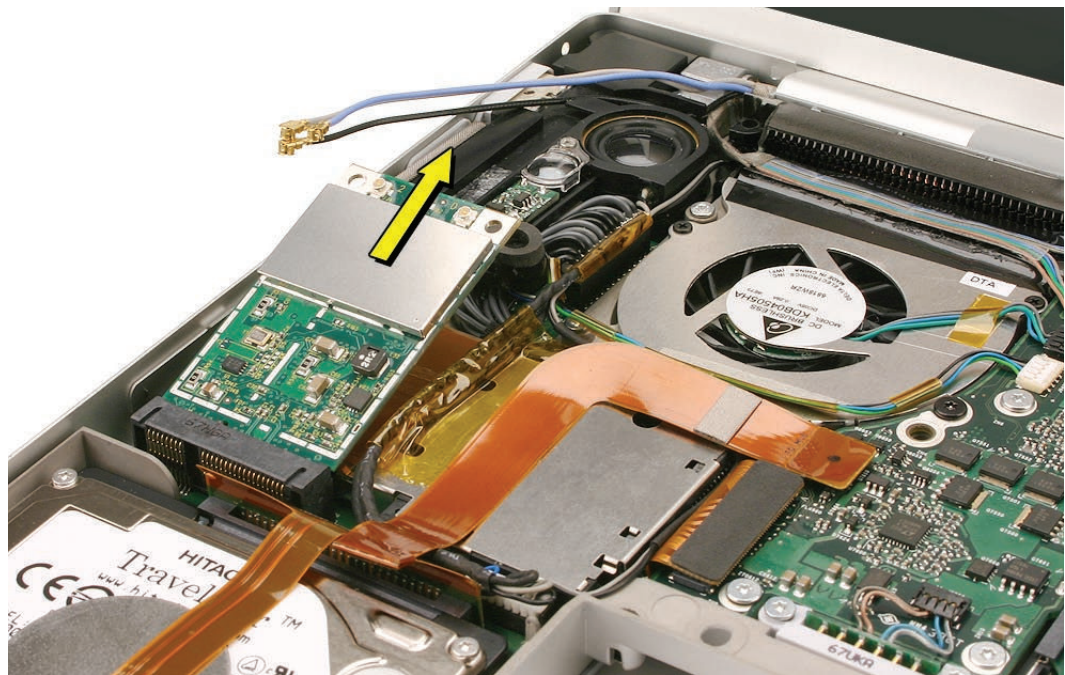


Procedure

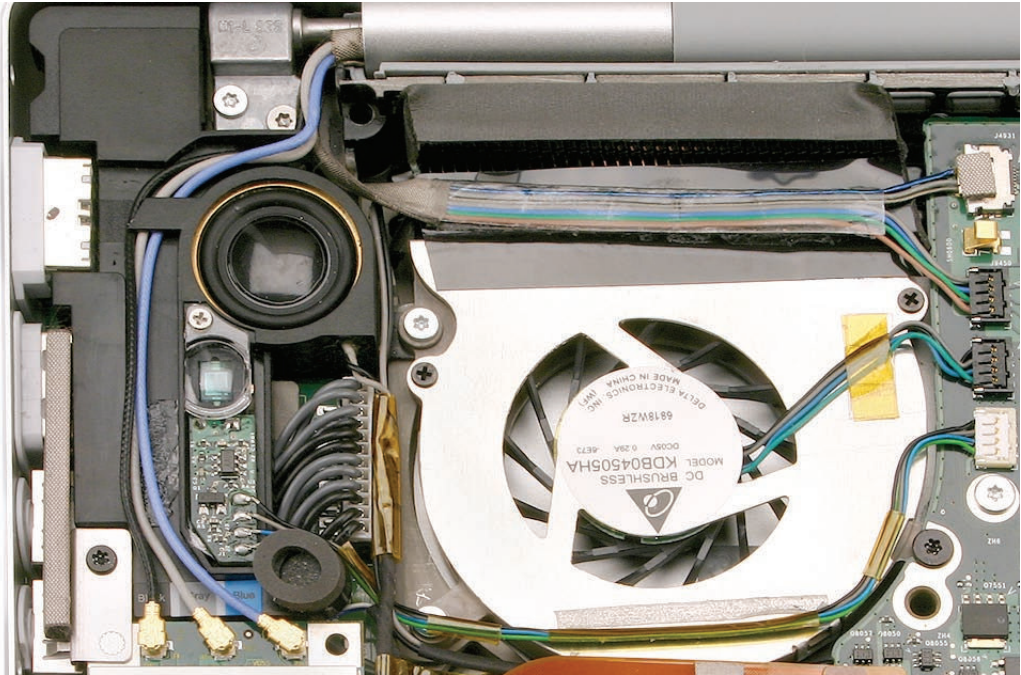
1. Remove the three antenna connectors. Lift straight up.
2. Remove the Torx T6 screw and bracket. The card should rise up slightly.



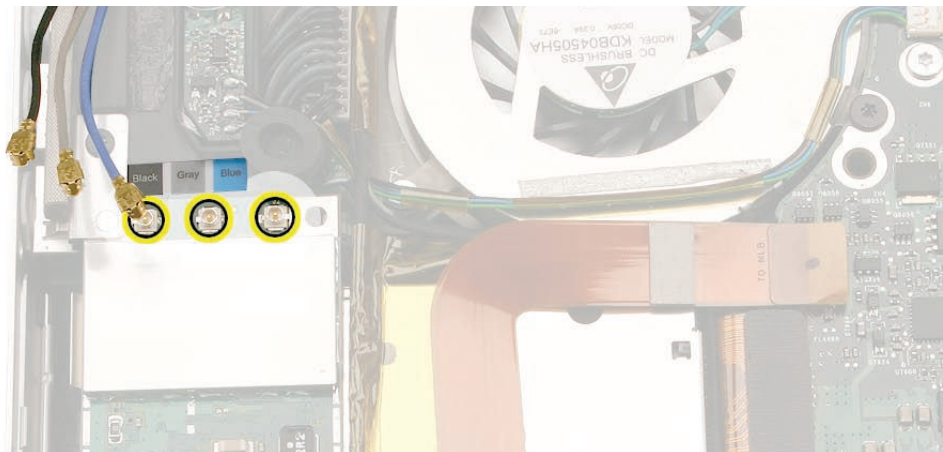
3. Pull the card straight out.



4. When installing the replacement card, verify that the cables alongside rest in the channel and do not get caught underneath.
5. Verify that the antenna cables route flat in the channel on the left speaker. Secure with Kapton tape, if necessary.



6. Connect each antenna cable to its respective terminal. Note that the color of each antenna cable corresponds with a matching color key located above the terminals.



7. Verify that the ambient light sensor flex cable is connected properly.
8. Reassemble the computer.
9. Testing should include AirPort function.