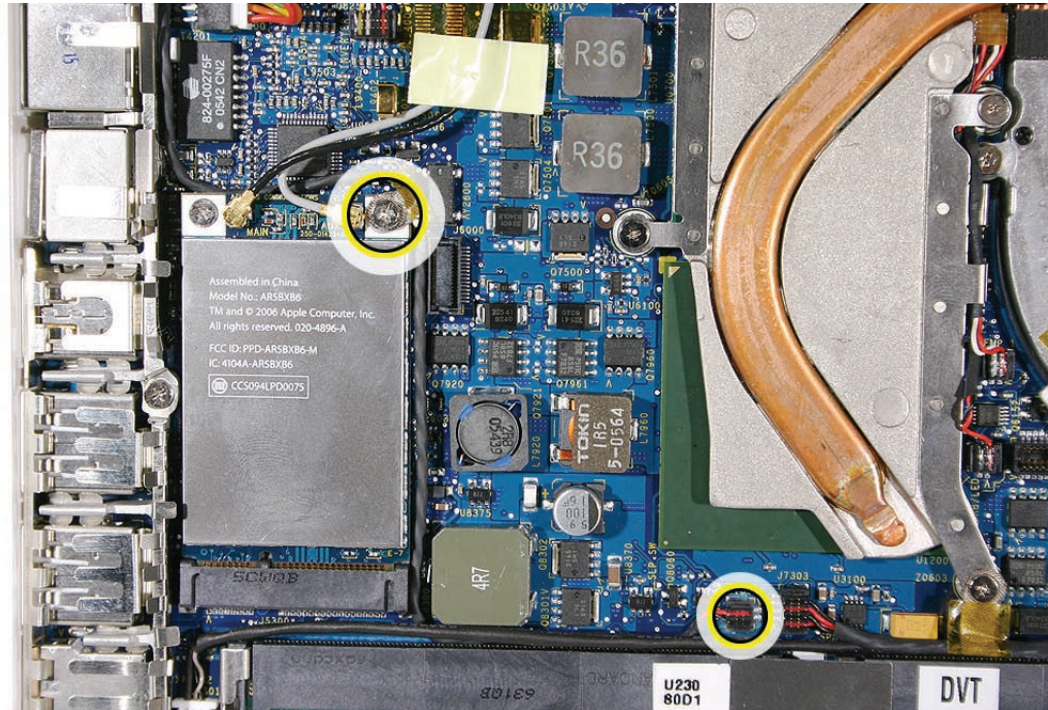
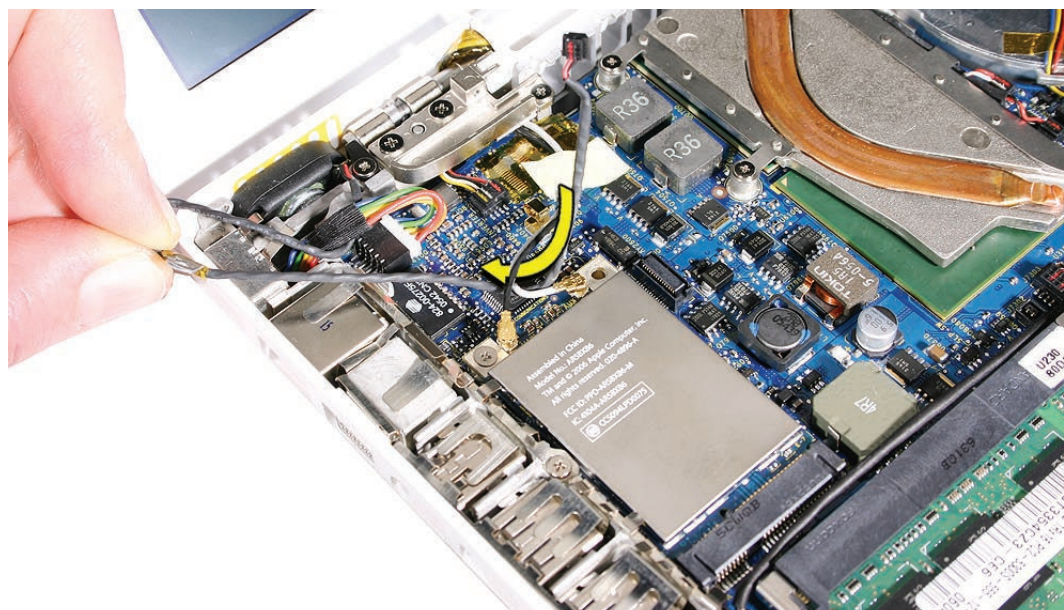


Procedure

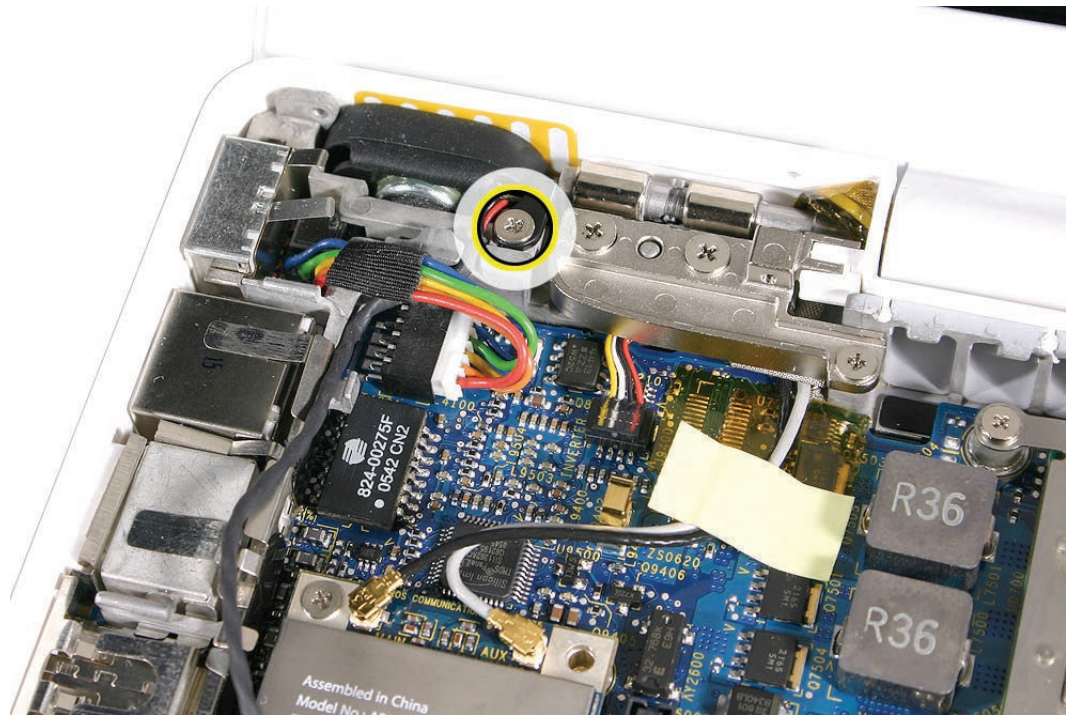
1. Disconnect the speaker cable from the logic board.
2. Remove the 5.5-mm long speaker screw near the left display hinge.



3. Route the cable underneath the AirPort cables.



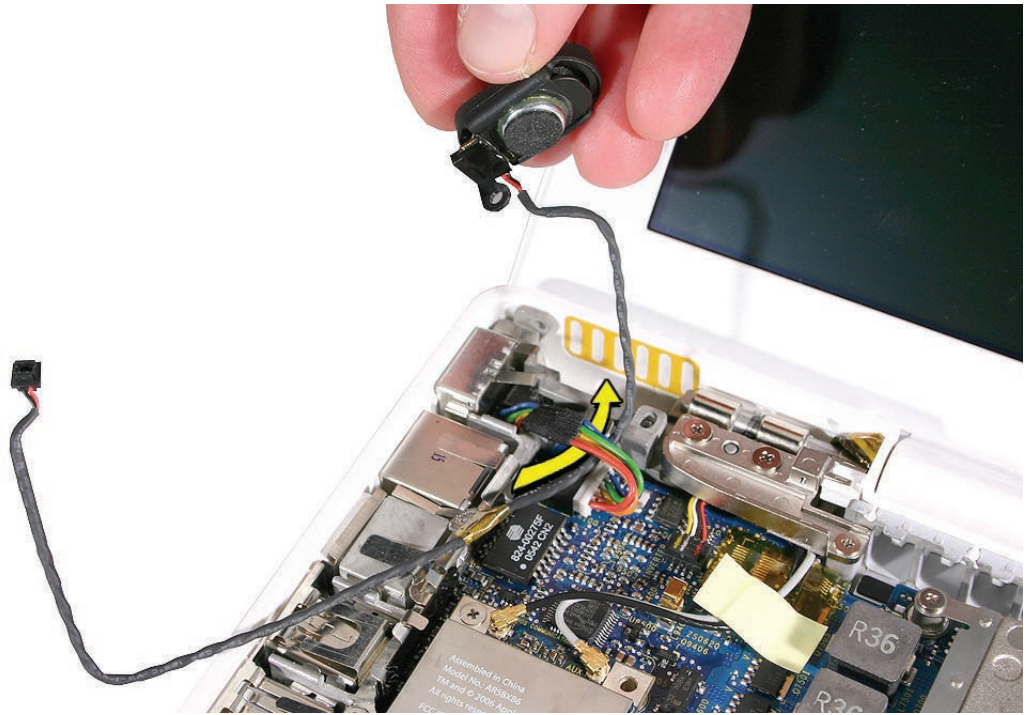
4. Remove the 6-mm long speaker screw.



5. Pull up on the speaker cable to remove it from the frame.
6. Pivot up the speaker from the left corner.



7. Route the speaker cable underneath the DC-in cable.



8. Install the replacement speaker cable, and reassemble and test the computer.