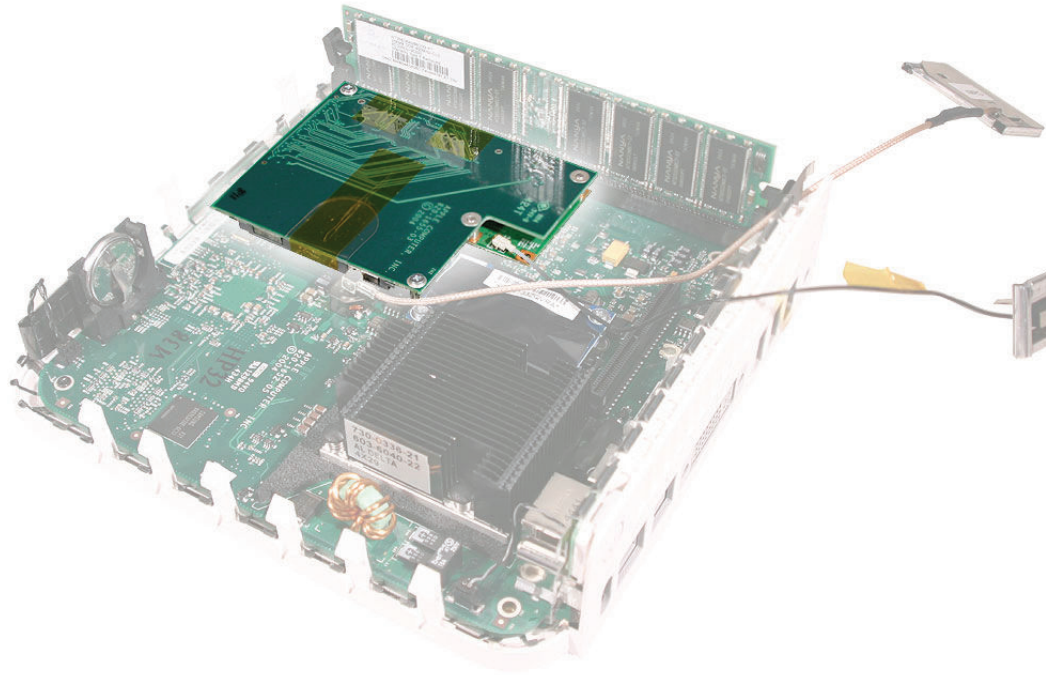
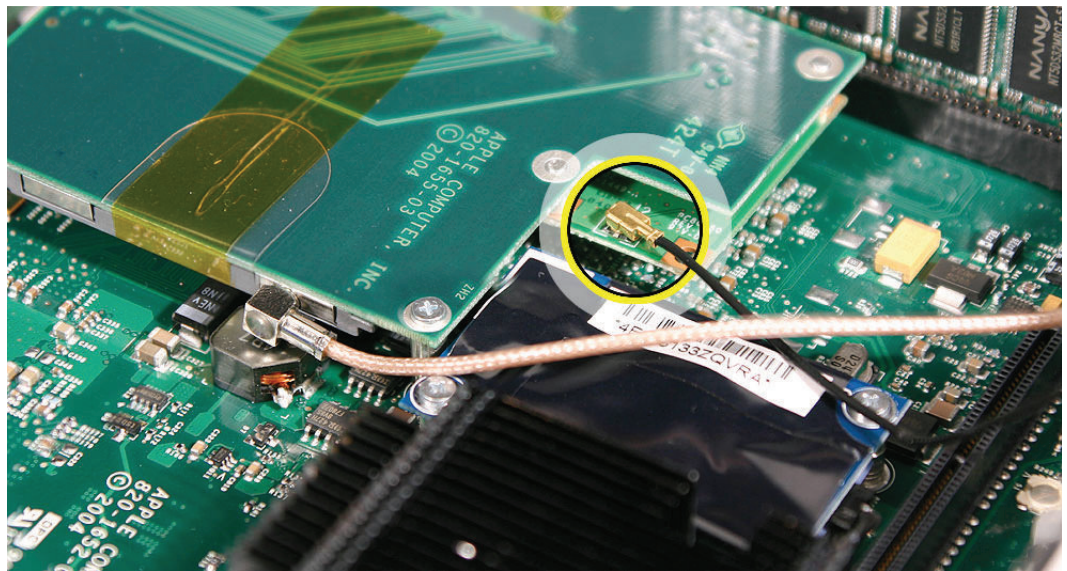


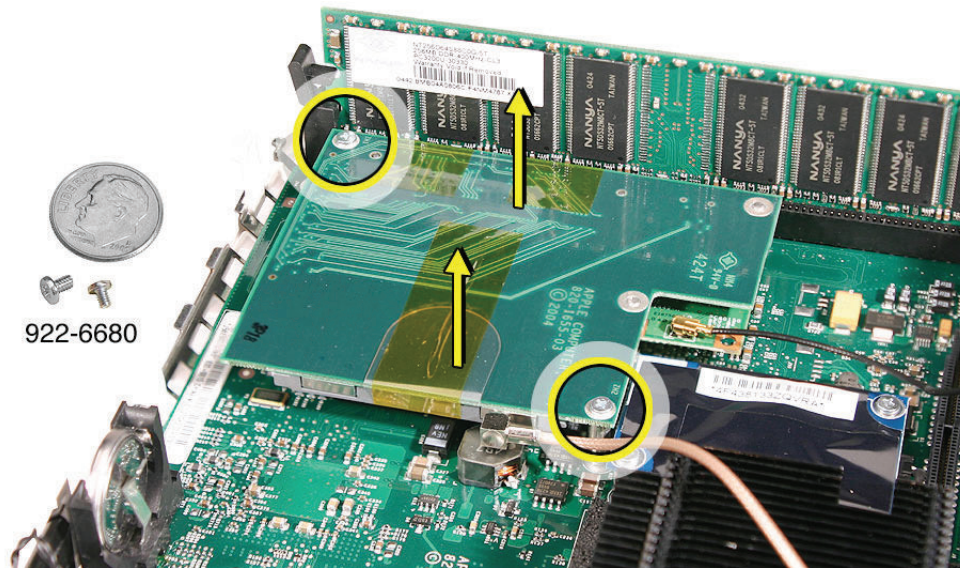
11. Locate the mezzanine board on the logic board.



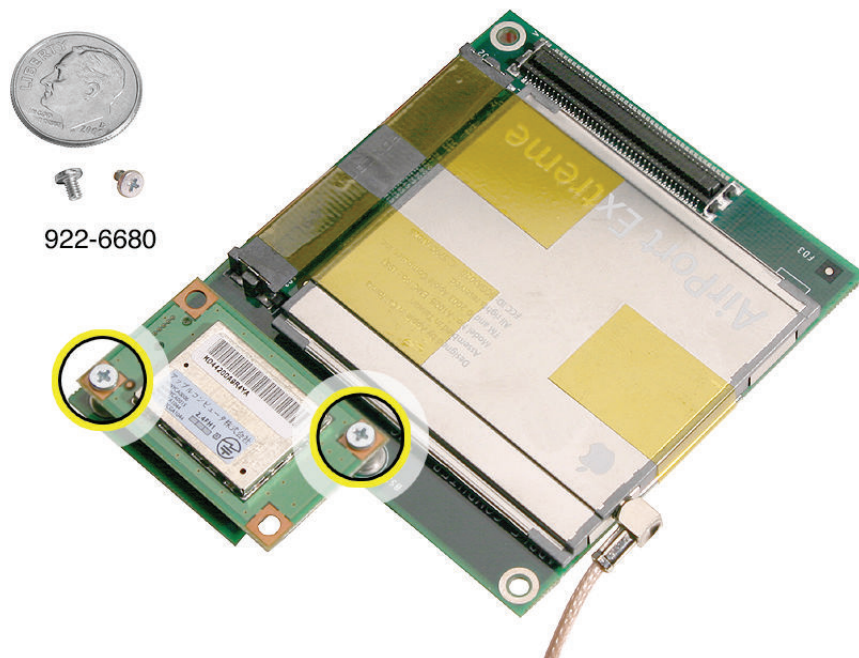
12. With your fingernail disconnect the Bluetooth antenna cable from the Bluetooth board.



13. Remove the two screws on the mezzanine board. Lift the mezzanine board straight up and off the logic board connector. **Caution:** The AirPort antenna cable is still attached to the mezzanine board. Remove the AirPort antenna cable if required to perform the repair.



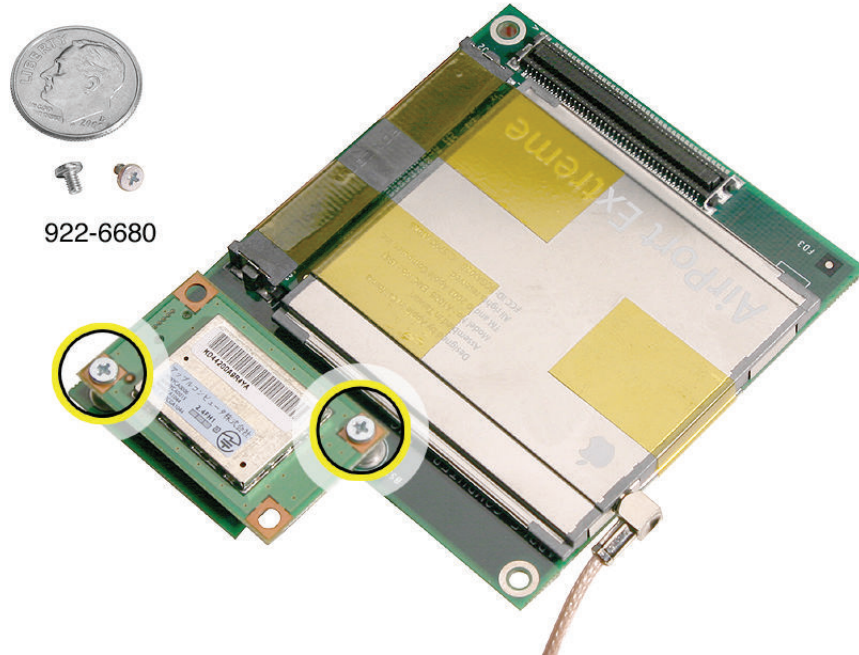
14. Turn over the mezzanine board. With a jeweler's #0 Phillips screwdriver remove the two screws on the Bluetooth board. Pull the Bluetooth board off the connector on the mezzanine board.



---

## Replacement Procedure

1. Install the Bluetooth board onto the mezzanine board. With a jeweler's #0 Phillips screwdriver replace the two screws.



2. Connect the mezzanine board to the logic board. With a jeweler's #0 Phillips screwdriver replace the two mezzanine board screws.

