



SERVICE STATION MANUAL

8140928



RS 50



SERVICE STATION MANUAL

RS 50

The descriptions and illustrations given in this publication are not binding; While the basic characteristics as described and illustrated in this manual remain unchanged, **aprilia** reserves the right, at any time and without being required to update this publication beforehand, to make any changes to components, parts or accessories, which it considers necessary to improve the product or which are required for manufacturing or construction reasons.

Not all versions shown in this publication are available in all countries. The availability of individual models should be confirmed with the official **aprilia** sales network.

© Copyright 2006- **aprilia**. All rights reserved. Reproduction of this publication in whole or in part is prohibited. **aprilia** - After-sales service.

aprilia trademark is property of Piaggio & C. S.p.A.

SERVICE STATION MANUAL RS 50

- This manual provides the main information to carry out regular maintenance operations on your vehicle.
- This manual is intended to **aprilia Dealers** and their qualified mechanics; several concepts have been deliberately omitted as they are considered unnecessary. As it is not possible to include complete mechanical notions in this manual, users should have basic mechanical knowledge or minimum knowledge about the procedures involved when repairing scooters. Without this knowledge, repairing or checking the vehicle may be inefficient or even dangerous. As the vehicle repair and check procedures are not described in detail, be extremely cautious so as not to damage components or injure individuals. In order to optimise customer satisfaction when using our vehicles, **aprilia** commits itself to continually improve its products and the relative documentation. The main technical modifications and changes in repair procedures are communicated to all **aprilia Sales Outlets and its International Subsidiaries**. These changes will be introduced in the subsequent editions of the manual. In case of need or further queries on repair and check procedures, consult **aprilia CUSTOMER DEPARTMENT**, which will be prepared to provide any information on the subject and any further communications on updates and technical changes related to the vehicle.

NOTE Provides key information to make the procedure easier to understand and carry out.

CAUTION Refers to specific procedures to carry out for preventing damages to the vehicle.

WARNING Refers to specific procedures to carry out to prevent injuries to the repairer.



Personal safety Failure to completely observe these instructions will result in serious risk of personal injury.



Safeguarding the environment Sections marked with this symbol indicate the correct use of the vehicle to prevent damaging the environment.



Vehicle intactness The incomplete or non-observance of these regulations leads to the risk of serious damage to the vehicle and sometimes even the invalidity of the guarantee.



INDEX OF TOPICS

CHARACTERISTICS

CHAR

TOOLING

TOOL

MAINTENANCE

MAIN

TROUBLESHOOTING

TROUBL

ELECTRICAL SYSTEM

ELE SYS

ENGINE FROM VEHICLE

ENG VE

ENGINE

ENG

SUSPENSIONS

SUSP

BRAKING SYSTEM

BRAK SYS

COOLING SYSTEM

COOL SYS

CHASSIS

CHAS

PRE-DELIVERY

PRE DE

INDEX OF TOPICS

CHARACTERISTICS

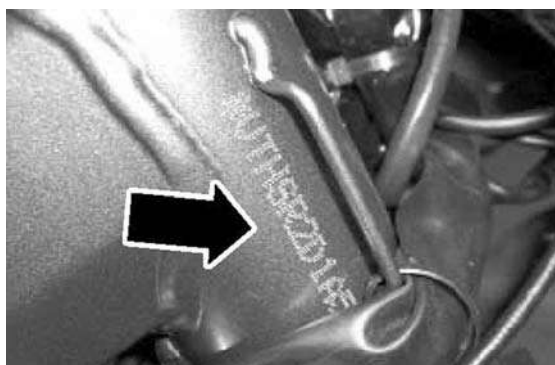
CHAR

Vehicle identification

Chassis prefix

The chassis number is stamped on the right side of the headstock.

ZD4PLOOXXXXX



Dimensions and mass

DIMENSIONS

| Specification | Desc./Quantity |
|---|--|
| Max. length | 1965 mm (77.36 in) |
| Max length (with rear mudguard extension) | 1985 mm (78.15 in) |
| Max. width | 720 mm (28.35 in) |
| Max. height (to top fairing) | 1100 mm (43.30 in) |
| Saddle height | 848 mm (33.38 in) |
| Wheelbase | 1300 mm (51.18 in) |
| Minimum ground clearance | 170 mm (6.70 in) |
| Kerb weight | 117 kg (257.94 lb) |
| Vehicle max. load (rider + luggage) | 105 kg (231.48 lb) |
| Vehicle max. load (rider + passenger + luggage) | 180 kg (396.83 lb) (in countries where passenger transport is permitted) |

Engine

ENGINE