

REPAIR MANUAL

FE 450 EU

FE 450 AUS

FE 450 USA

FE 570 EU

FE 570 AUS

FE 570 USA

2009

Article no. 3803004en



HUSABERG

It is important that you read this owner's manual carefully and completely before the start of work.

Only use **ORIGINAL HUSABERG SPARE PARTS**.

This vehicle can only fulfill the demands placed on it in the long run if the specified service work is performed regularly by qualified experts.

The repair manual was written to correspond to the most current state of this model series. We reserve the right to make changes in the interest of technical advancement without, at the same time, updating this repair manual. We shall not provide a description of general workshop methods. Likewise, safety rules that apply in a workshop are not specified here. It is assumed that repair work will be performed by a fully trained mechanic.

All specifications are non-binding. HUSABERG, a division of KTM SMC AG (referred to herein as HUSABERG), specifically reserves the right to modify or delete technical specifications, prices, colors, forms, materials, services, designs, equipment, etc., without prior notice and without specifying reasons, to adapt these to local conditions, as well as to stop production of a particular model without prior notice. HUSABERG accepts no liability for delivery options, deviations from illustrations and descriptions or misprints and other errors. The models portrayed partly contain special equipment that does not belong to the regular scope of delivery.

© 2008 by HUSABERG eine Division der KTM SMC AG, Mattighofen Austria

All rights reserved

Reproduction, even in part, is permitted only with the express written permission of the copyright owner.



ISO 9001(12 100 6061)

Within the meaning of the international quality management standard ISO 9001, HUSABERG uses quality assurance processes that lead to the maximum possible quality of the products.

Issued by: TÜV Management Service

HUSABERG eine Division der KTM SMC AG
5230 Mattighofen, Austria

MEANS OF REPRESENTATION	5	Disassembling the rebound adjuster	40
IMPORTANT NOTES	6	Removing the heim joint	41
LOCATION OF SERIAL NUMBERS	7	Installing the heim joint	41
Chassis number	7	Assembling the rebound adjuster	42
Type label (FE EU, FE AUS)	7	Assembling the seal ring retainer	43
Type label (FE USA)	7	Assembling the piston rod	43
Key number (FE EU, FE AUS).....	7	Assembling the shock absorber	45
Engine number.....	7	Bleeding and filling the shock absorber	47
Fork part number.....	8	Filling the shock absorber with nitrogen	49
Shock absorber part number	8	Installing the spring.....	50
MOTORCYCLE.....	9	Removing the swingarm, with shock absorber and rear wheel	51
Jacking up the motorcycle	9	Installing the swingarm, with shock absorber and rear wheel	52
Removing the motorcycle from the work stand	9	05/EXHAUST	54
Starting	9	Removing the main silencer.....	54
01/FORK, TRIPLE CLAMP.....	10	Installing the main silencer	54
Adjusting the compression damping of the fork	10	Removing the exhaust system	54
Adjusting the rebound damping of the fork.....	10	Installing the exhaust system.....	55
Adjusting the spring preload of the fork	10	06/AIR FILTER.....	57
Bleeding the fork legs	11	Removing the air filter	57
Cleaning the dust boots of the fork legs	11	Installing the air filter	57
Loosening the fork protection.....	11	Cleaning air filter.....	57
Positioning the fork protection	12	07/FUEL TANK, SEAT, TRIM.....	59
Removing the fork legs.....	12	Removing the seat	59
Installing the fork legs	12	Mounting the seat	59
Removing the fork protector.....	13	Removing the fuel tank	59
Installing the fork protector	13	Installing the fuel tank	60
Performing a fork service.....	14	Removing the spoiler	61
Disassembling the fork legs	14	Installing the spoiler	61
Cartridge disassembly	17	Checking the fuel pressure	62
Disassembling the compression damping fitting	19	08/MASK, FENDER, DECAL	63
Checking the fork legs.....	19	Removing the front fender.....	63
Assembling the compression damping fitting.....	20	Installing the front fender.....	63
Assembling the cartridge.....	21	Removing the start number plate (FE USA)	63
Assembling the fork legs	23	Installing the start number plate (FE USA).....	64
Greasing the steering head bearing.....	27	09/FRONT WHEEL	65
Removing the lower triple clamp	27	Removing the front wheel.....	65
Installing the lower triple clamp.....	28	Installing the front wheel.....	65
Checking the play of the steering head bearing.....	29	Checking the tire air pressure	66
Adjusting the play of the steering head bearing	29	Checking the tire condition.....	66
03/FRAME	30	Checking the brake disks.....	67
Removing the engine guard	30	10/REAR WHEEL	68
Installing the engine guard	30	Removing the rear wheel	68
04/SHOCK ABSORBER, SWINGARM.....	31	Installing the rear wheel	68
Adjusting the high-speed compression damping of the shock absorber	31	Checking the chain tension	69
Adjusting the low-speed compression damping of the shock absorber.....	31	Adjusting the chain tension	69
Adjusting the rebound damping of the shock absorber.....	32	Checking the chain wear	70
Measuring rear wheel sag unloaded	32	Checking the rear sprocket/engine sprocket for wear	71
Checking the static sag of the shock absorber	32	Checking for chain dirt accumulation	71
Checking the riding sag of the shock absorber	33	Cleaning the chain.....	71
Adjusting the spring preload of the shock absorber	33	Adjusting the chain guide.....	72
Adjusting the riding sag	34	Checking the spoke tension	72
Removing the shock absorber	34	11/WIRING HARNESS, BATTERY	73
Installing the shock absorber	34	Disconnecting the negative cable of the battery	73
Performing a shock absorber service.....	35	Connecting the negative cable of the battery	73
Removing the spring.....	35	Changing the main fuse	73
Disassembling the shock absorber.....	36	Changing the fuses of individual power consumers.....	74
Disassembling the piston rod	37	Removing the battery	75
Disassembling the seal ring retainer	38	Installing the battery.....	75
Replacing the pilot bushing.....	39	Charging the battery	76
Checking the shock absorber	39		

13/BRAKE SYSTEM.....	78	Removing the primary gear	106
Checking the free travel of the hand brake lever	78	Removing the free wheel gear	107
Adjusting the free travel of the handbrake lever (FE EU, FE AUS)	78	Removing the torque limiter	107
Adjusting the basic position of the handbrake lever (FE USA)	78	Removing the starter idler gear	107
Checking the front brake fluid level	79	Removing the oil pump gears.....	107
Adding front brake fluid	79	Removing the oil pumps.....	108
Checking the front brake linings.....	80	Removing the shift shaft	108
Changing the front brake linings	80	Removing the shift drum locating unit	108
Checking the free travel of the foot brake lever	82	Removing the locking lever.....	108
Adjusting the basic position of the footbrake lever	82	Removing the left section of the engine case.....	109
Checking the rear brake fluid level	83	Removing the shift rails	109
Adding rear brake fluid	83	Removing the shift drum.....	109
Checking the rear brake linings.....	84	Removing the shift forks	109
Changing the rear brake linings.....	84	Removing the diaphragm.....	110
14/LIGHTING SYSTEM, INSTRUMENTS	86	Removing the transmission shafts	110
Adjusting the speedometer functions.....	86	Removing the crankshaft.....	110
Setting kilometers or miles	86	30/ENGINE - WORK ON THE INDIVIDUAL PARTS	111
Activating the additional functions	87	Working on the right section of the engine case.....	111
Setting the wheel circumference	87	Working on the left section of the engine case.....	112
Setting the clock	88	Removing the oil pressure regulator valve.....	113
Removing the headlight mask with the headlight (FE EU, FE AUS)	88	Checking the spring length of the oil pressure regulator valve	113
Installing the headlight mask with the headlight (FE EU, FE AUS)	88	Installing the oil pressure regulator valve	113
Checking the headlight adjustment (FE EU, FE AUS).....	89	Removing the crankshaft seal ring in the clutch cover	113
Adjusting the beam width of the headlight (FE EU, FE AUS)	89	Installing the crankshaft seal ring in the clutch cover.....	114
Changing the headlight bulb (FE EU, FE AUS)	89	Removing the water pump.....	114
30/ENGINE.....	91	Installing the water pump.....	115
Removing the engine	91	Checking the balancer shaft	115
Installing the engine	94	Removing the timing chain sprocket.....	116
30/ENGINE DISASSEMBLY.....	99	Installing the timing chain sprocket.....	116
Clamping the engine in the engine work stand.....	99	Removing the crankshaft bearing inner ring.....	116
Draining the engine oil.....	99	Installing the crankshaft bearing inner ring	117
Removing the oil line	99	Changing the conrod bearing	117
Removing the starter motor	99	Checking the crankshaft run-out at the bearing pin	119
Removing the oil filter.....	99	Measuring the crankshaft end play	119
Removing the valve cover	100	Checking/measuring the cylinder.....	120
Removing the spark plug.....	100	Checking/measuring the piston	120
Removing the generator cover	100	Checking the piston ring end gap	121
Positioning the engine at ignition top dead center (TDC)	100	Piston/cylinder - determining the mounting clearance	121
Removing the timing chain tensioner.....	101	Checking the oil pumps for wear	122
Removing the camshaft.....	101	Disassembling the autodecompressor	122
Removing the cylinder head.....	102	Assembling the autodecompressor.....	123
Removing the piston	102	Checking the camshaft.....	123
Removing the distance bushing	102	Checking the timing assembly	124
Removing the rotor	103	Preparing the timing chain tensioner for installation	124
Removing the balance weight	103	Removing the coolant temperature sensor	125
Removing the timing chain guide rail	103	Removing the rocker arm.....	125
Removing the timing chain tensioning rail.....	103	Removing the valves	125
Removing the timing chain securing guide	104	Changing the camshaft bearing.....	126
Removing the timing chain.....	104	Checking the valves	127
Removing the ignition pulse generator	104	Checking the valve springs	127
Removing the water pump cover	104	Checking the valve spring seat	127
Removing the clutch cover	104	Checking the cylinder head	128
Disassembling the clutch disks	105	Installing the valves.....	128
Removing the primary gear nut	105	Installing the rocker arm	129
Removing the outer clutch hub	106	Installing the coolant temperature sensor.....	129
Removing the balancer shaft	106	Checking the clutch.....	130
		Checking the shift mechanism	131
		Preassembling the shift shaft.....	132
		Disassembling the main shaft	132
		Assembling the main shaft	132
		Disassembling the countershaft	133

Assembling the countershaft.....	133	Checking the engine oil level	158
Checking the transmission.....	134	Adding engine oil	158
Checking the electric starter mode	135	Changing the engine oil and oil filter, cleaning the engine oil screen	158
Removing the free wheel	135	Draining engine oil, cleaning engine oil screen	158
Installing the free wheel.....	136	Removing the oil filter.....	159
30/ENGINE ASSEMBLY	137	Installing the oil filter	160
Installing the crankshaft.....	137	Filling up with engine oil.....	160
Installing the transmission shafts.....	137	41/THROTTLE VALVE BODY.....	161
Installing the diaphragm	137	Idle speed adjusting screw	161
Installing the shift fork.....	138	Taking off the throttle valve body and allowing it to hang to the side	161
Installing the shift drum.....	138	Installing the throttle valve body	162
Installing the shift rails	138	Adjusting the idle speed.....	163
Installing the left engine case	138	FAULT CODE	164
Installing the locking lever.....	139	TECHNICAL DATA - ENGINE.....	219
Installing the shift drum locating unit.....	139	Capacity - engine oil	219
Installing the shift shaft	139	Capacity - coolant.....	219
Installing the oil pumps	140	TECHNICAL DATA - ENGINE TOLERANCES, WEAR LIMITS	220
Installing the oil pump gears	140	TECHNICAL DATA - ENGINE TIGHTENING TORQUES.....	222
Installing the starter idler gear	140	TECHNICAL DATA - CHASSIS	224
Installing the torque limiter	141	Lighting equipment	224
Installing the free wheel gear	141	Tires	225
Installing the primary gear.....	141	Capacity - fuel.....	225
Installing the balancer shaft	141	TECHNICAL DATA - FORK.....	226
Installing the outer clutch hub.....	141	TECHNICAL DATA - SHOCK ABSORBER	227
Installing the primary gear nut	142	TECHNICAL DATA - CHASSIS TIGHTENING TORQUES	228
Installing the clutch discs	142	CLEANING/PROTECTION	229
Installing the clutch cover	143	Cleaning the motorcycle	229
Installing the water pump cover	143	Protection for winter operation	230
Installing the ignition pulse generator.....	143	STORAGE	231
Installing the timing chain.....	144	Storage.....	231
Installing the timing chain securing guide.....	144	Putting into operation after storage	231
Installing the timing chain tensioning rail	144	SERVICE SCHEDULE.....	232
Installing the timing chain guide rail	144	Important maintenance work to be carried out by an authorized HUSABERG workshop.....	232
Installing the balance weight	144	Important maintenance work to be carried out by an authorized HUSABERG workshop. (as additional order) ...	233
Installing the rotor	145	Important checks and maintenance work to be carried out by the rider	234
Installing the distance bushing	145	WIRING DIAGRAM	236
Installing the piston.....	145	1 of 3 (FE EU)	236
Installing the cylinder head	147	2 of 3 (FE EU)	238
Installing the camshaft	148	3 of 3 (FE EU)	242
Installing the timing chain tensioner	148	1 of 3 (FE USA)	246
Checking the valve clearance.....	148	2 of 3 (FE USA)	248
Adjusting the valve clearance.....	149	3 of 3 (FE USA)	252
Installing the generator cover.....	149	1 of 3 (FE AUS)	254
Installing the spark plug.....	150	2 of 3 (FE AUS)	256
Installing the valve cover.....	150	3 of 3 (FE AUS)	260
Installing the oil filter	150	SUBSTANCES.....	263
Installing the oil screen.....	150	AUXILIARY SUBSTANCES.....	265
Assembling the starter motor	151	SPECIAL TOOLS.....	267
Installing the oil line.....	151	STANDARDS.....	278
Removing the engine from the work stand.....	151	INDEX	279
32/CLUTCH	152		
Checking the fluid level of the hydraulic clutch	152		
Changing the hydraulic clutch fluid	152		
35/WATER PUMP, COOLING SYSTEM	154		
Checking the coolant level.....	154		
Checking the antifreeze and coolant level	154		
Draining the coolant	155		
Refilling coolant.....	155		
38/LUBRICATION SYSTEM	156		
Oil circuit	156		
Checking the engine oil pressure.....	156		

Symbols used

The symbols used are explained in the following.



Indicates an expected reaction (e.g. of a work step or a function).



Indicates an unexpected reaction (e.g. of a work step or a function).



Identifies a page reference (more information is provided on the specified page).

Formats used

The typographical and other formats used are explained in the following.

Name	Indicates a proprietary name.
Name[®]	Identifies a protected name.
Brand[™]	Identifies a brand in merchandise traffic.

Warranty

The work prescribed in the service schedule must be carried out in an authorized HUSABERG workshop and confirmed in the customer's service record, since otherwise no warranty claims will be recognized. No warranty claims can be considered for damage resulting from manipulations and/or alterations to the vehicle.

Fuel, oils, etc.

You should use the fuels, oils and greases according to specifications as listed in the repair manual.

Spare parts, accessories

Only use spare parts and accessory products that have been approved and/or recommended by HUSABERG. HUSABERG accepts no liability for other products and any resulting damage or loss.

The current **HUSABERG Force Depot** parts for your vehicle can be found on the HUSABERG website.
International HUSABERG website: www.husaberg.com

Work rules

Special tools are required for some work. These are not part of the vehicle standard equipment, but they can be ordered with the item number stated in parentheses. Ex.: Valve spring mounter (59029019000)

When the vehicle is assembled, non-reusable parts (e.g., self-locking screws and nuts, gaskets, seal rings, O-rings, splints, lock washers) must be replaced with new parts.


Where thread lockers are used on screw connections (e.g., **Loctite®**), follow the instructions for use from the manufacturer.

After disassembly, clean the parts that are to be reused and check them for damage and wear. Replace damaged or worn parts.


After you complete the repair or maintenance work, check the roadworthiness of the vehicle.


Notes/warnings

Pay close attention to the notes/warnings.


 **Info**
Various information and warning labels are affixed to the vehicle. Do not remove information/warning labels. If they are missing, you or others may not recognize sources of danger and may therefore be injured.

Grades of risks

 **Danger**
Identifies a danger that will immediately and invariably lead to fatal or serious permanent injury if the appropriate measures are not taken.

 **Warning**
Identifies a danger that is likely to lead to fatal or serious injury if the appropriate measures are not taken.

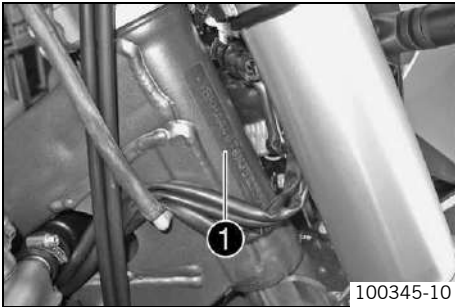
Note
Identifies a danger that will lead to considerable machine and material damage if the appropriate measures are not taken.

 **Warning**
Identifies a danger that will lead to environmental damage if the appropriate measures are not taken.

Repair manual

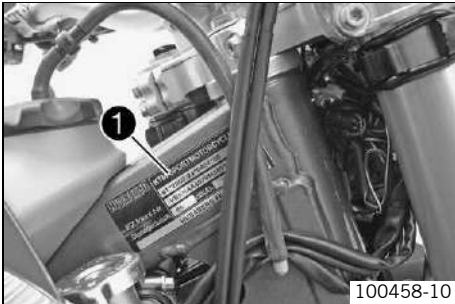
- It is imperative that you read this owner's manual carefully and completely before the start of work. It contains useful information and many tips on how to repair and maintain your vehicle.
- The presence of the appropriate HUSABERG special tools, workbench and workshop equipment are a prerequisite.

Chassis number



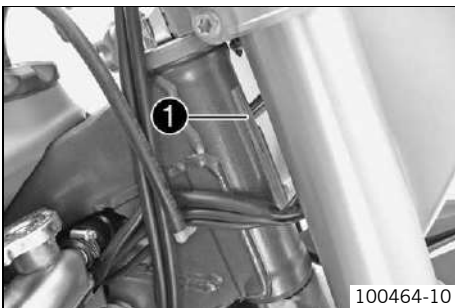
The chassis number ❶ is stamped on the right side of the steering head.

Type label (FE EU, FE AUS)



The type label ❶ is fixed to the frame at the front right.

Type label (FE USA)



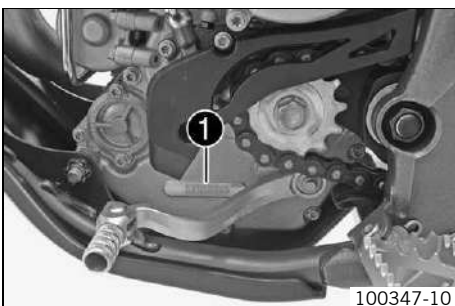
The type label ❶ is fixed to the front of the steering head.

Key number (FE EU, FE AUS)



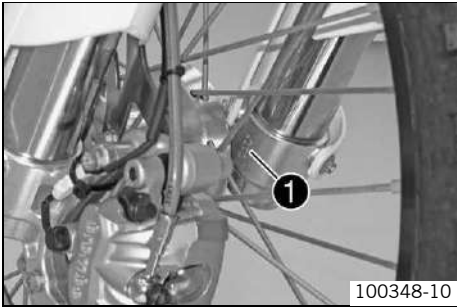
The key number ❶ is stamped on the key strap.

Engine number



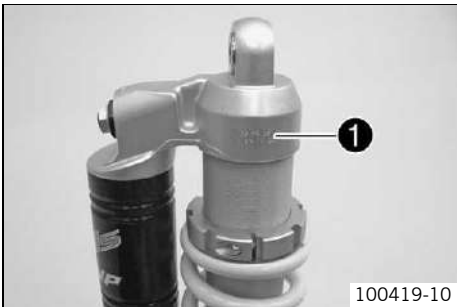
The engine number ❶ is stamped on the left side of the engine under the engine sprocket.

Fork part number



The fork part number ❶ is stamped on the inner side of the fork stub.

Shock absorber part number



The shock absorber part number ❶ is stamped on the upper part of the shock absorber above the adjusting ring. The shock absorber part number is not visible when the shock absorber is installed.